

Claudin 5 antibody

Cat. No. GTX00796

Host	Rabbit
Clonality	Polyclonal
Isotype	IgG
Application	WB, ICC/IF, IHC-P
Reactivity	Human, Mouse, Monkey

Reference (1)
Package
100 µl

APPLICATION

Application Note

*Optimal dilutions/concentrations should be determined by the researcher.

Suggested dilution	Recommended dilution
WB	1:500-1:2000
ICC/IF	1:100-1:500
IHC-P	1:50-1:200

Not tested in other applications.

Calculated MW 23 kDa. ([Note](#))

PROPERTIES

Form	Liquid
Buffer	PBS, 150mM NaCl, 50% Glycerol
Preservative	0.02% Sodium azide
Storage	Store as concentrated solution. Centrifuge briefly prior to opening vial. For short-term storage (1-2 weeks), store at 4°C. For long-term storage, aliquot and store at -20°C or below. Avoid multiple freeze-thaw cycles.
Concentration	1 mg/ml (Please refer to the vial label for the specific concentration.)
Immunogen	A synthesized peptide derived from human Claudin 5, corresponding to a region within C-terminal amino acids.
Purification	Purified by antigen-affinity chromatography From serum
Conjugation	Unconjugated

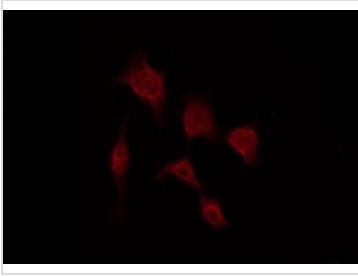
Note For laboratory research use only. Not for any clinical, therapeutic, or diagnostic use in humans or animals. Not for animal or human consumption.

Purchasers shall not, and agree not to enable third parties to, analyze, copy, reverse engineer or otherwise attempt to determine the structure or sequence of the product.



For full product information, images and publications, please visit our [website](#).

DATA IMAGES



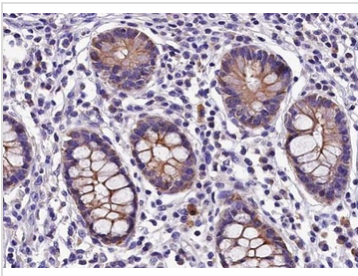
GTx00796 ICC/IF Image

ICC/IF analysis of PFA-fixed MCF7 cells using GTx00796 Claudin 5 antibody.

Red : Primary antibody

Permeabilization : 0.1% Triton X-100

Dilution : 1:200

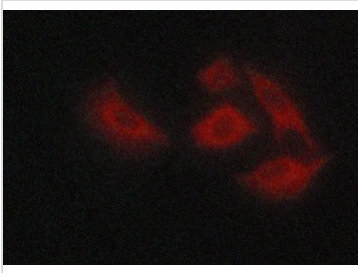


GTx00796 IHC-P Image

IHC-P analysis of human colon tissue using GTx00796 Claudin 5 antibody.

Antigen retrieval : Heat mediated antigen retrieval step in citrate buffer

Dilution : 1:100



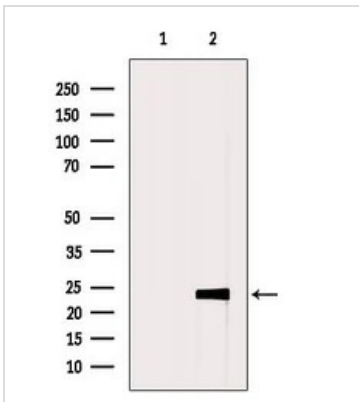
GTx00796 ICC/IF Image

ICC/IF analysis of PFA-fixed A549 cells using GTx00796 Claudin 5 antibody.

Red : Primary antibody

Permeabilization : 0.1% saponin

Dilution : 1:400



GTx00796 WB Image

WB analysis of VERO cell lysate using GTx00796 Claudin 5 antibody. The lane on the left was treated with blocking peptide.



For full product information, images and publications, please visit our [website](https://www.genetex.com).