

DARPP-32 (phospho Thr34) antibody

Cat. No. GTX00802

Host	Rabbit
Clonality	Polyclonal
Isotype	IgG
Application	WB, ICC/IF, IHC-P, ELISA
Reactivity	Human, Mouse, Rat

Package
100 µl

APPLICATION

Application Note

*Optimal dilutions/concentrations should be determined by the researcher.

Suggested dilution	Recommended dilution
WB	1:500-1:2000
ICC/IF	1:100-1:500
IHC-P	1:50-1:200
ELISA	Assay dependent

Not tested in other applications.

Calculated MW 23 kDa. ([Note](#))

PROPERTIES

Form	Liquid
Buffer	PBS, 150mM NaCl, 50% Glycerol
Preservative	0.02% Sodium azide
Storage	Store as concentrated solution. Centrifuge briefly prior to opening vial. For short-term storage (1-2 weeks), store at 4°C. For long-term storage, aliquot and store at -20°C or below. Avoid multiple freeze-thaw cycles.
Concentration	1 mg/ml (Please refer to the vial label for the specific concentration.)
Immunogen	A synthesized peptide derived from human DARPP-32 around the phosphorylation site of Thr34.
Purification	Purified by sequential chromatography on phospho-peptide and non-phospho-peptide columns From serum
Conjugation	Unconjugated

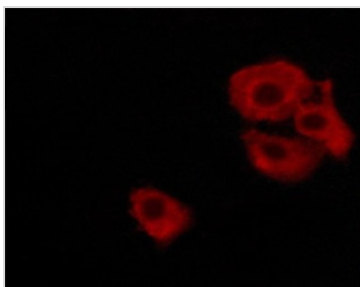


For full product information, images and publications, please visit our [website](#).

For laboratory research use only. Not for any clinical, therapeutic, or diagnostic use in humans or animals. Not for animal or human consumption.

Note

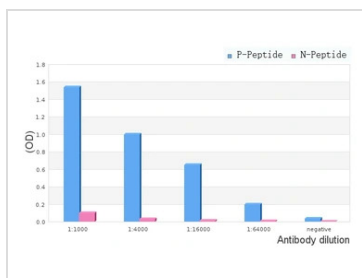
Purchasers shall not, and agree not to enable third parties to, analyze, copy, reverse engineer or otherwise attempt to determine the structure or sequence of the product.

DATA IMAGES

GTX00802 ICC/IF Image

ICC/IF analysis of PFA-fixed MKN-45 cells treated with 30 μ M Forskolin for 20 min using GTX00802 DARPP-32 (phospho Thr34) antibody.

Permeabilization : 0.1% saponin

Dilution : 1:400

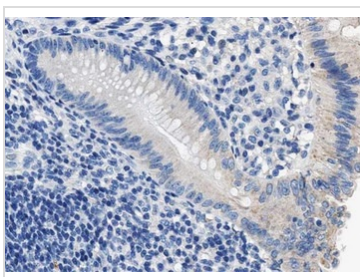

GTX00802 ELISA Image

ELISA analysis of phospho- and non phospho- immunogen peptide using GTX00802 DARPP-32 (phospho Thr34) antibody.

P-peptide : phospho-peptide

N-peptide : non-phospho-peptide

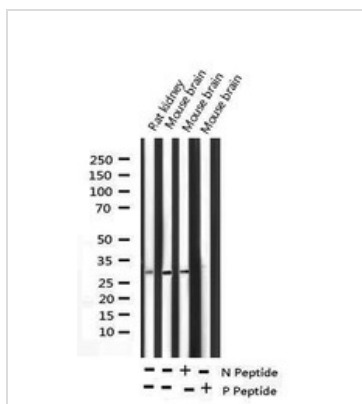
Peptides concentration : 1 μ g/ml


GTX00802 IHC-P Image

IHC-P analysis of human colon cancer tissue sections using GTX00802 DARPP-32 (phospho Thr34) antibody.

Antigen retrieval : Heat mediated antigen retrieval step in citrate buffer

Dilution : 1:100


GTX00802 WB Image

WB analysis of rat kidney and mouse brain tissue lysates using GTX00802 DARPP-32 (phospho Thr34) antibody pre-incubated with phospho- or non-phospho- peptide.

P-peptide : phospho-peptide

N-peptide : non-phospho-peptide



For full product information, images and publications, please visit our [website](https://www.genetex.com).