

## DARPP-32 (phospho Thr75) antibody

**Cat. No. GTX00803**

|                    |                          |
|--------------------|--------------------------|
| <b>Host</b>        | Rabbit                   |
| <b>Clonality</b>   | Polyclonal               |
| <b>Isotype</b>     | IgG                      |
| <b>Application</b> | WB, ICC/IF, IHC-P, ELISA |
| <b>Reactivity</b>  | Human, Mouse, Rat        |

**Package**  
100 µl

## APPLICATION

**Application Note**

\*Optimal dilutions/concentrations should be determined by the researcher.

| Suggested dilution | Recommended dilution |
|--------------------|----------------------|
| WB                 | 1:500-1:2000         |
| ICC/IF             | 1:100-1:500          |
| IHC-P              | 1:50-1:200           |
| ELISA              | Assay dependent      |

Not tested in other applications.

**Calculated MW** 23 kDa. ( [Note](#) )

## PROPERTIES

|                      |  |
|----------------------|--|
| <b>Form</b>          | Liquid   |
| <b>Buffer</b>        | PBS, 150mM NaCl, 50% Glycerol  |
| <b>Preservative</b>  | 0.02% Sodium azide   |
| <b>Storage</b>       | Store as concentrated solution. Centrifuge briefly prior to opening vial. For short-term storage (1-2 weeks), store at 4°C. For long-term storage, aliquot and store at -20°C or below. Avoid multiple freeze-thaw cycles. |
| <b>Concentration</b> | 1 mg/ml (Please refer to the vial label for the specific concentration.)   |
| <b>Immunogen</b>     | A synthesized peptide derived from human DARPP-32 around the phosphorylation site of Thr75.  |
| <b>Purification</b>  | Purified by sequential chromatography on phospho-peptide and non-phospho-peptide columns<br>From serum   |
| <b>Conjugation</b>   | Unconjugated   |

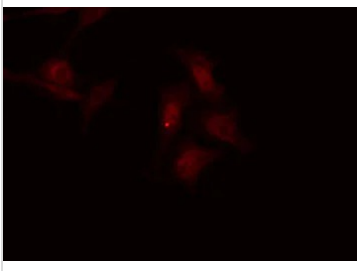


For full product information, images and publications, please visit our [website](#).

For laboratory research use only. Not for any clinical, therapeutic, or diagnostic use in humans or animals. Not for animal or human consumption.

**Note**

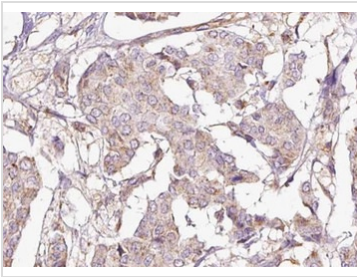
Purchasers shall not, and agree not to enable third parties to, analyze, copy, reverse engineer or otherwise attempt to determine the structure or sequence of the product.

**DATA IMAGES**

**GTX00803 ICC/IF Image**

ICC/IF analysis of PFA-fixed HeLa cells using GTX00803 DARPP-32 (phospho Thr75) antibody.

Permeabilization : 0.1% Triton X-100

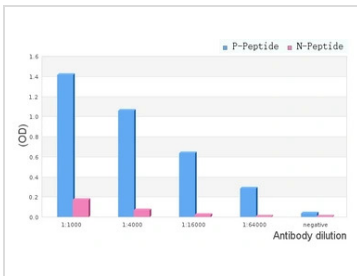
Dilution : 1:200


**GTX00803 IHC-P Image**

IHC-P analysis of human breast cancer tissue using GTX00803 DARPP-32 (phospho Thr75) antibody.

Antigen retrieval : Heat mediated antigen retrieval step in citrate buffer

Dilution : 1:100

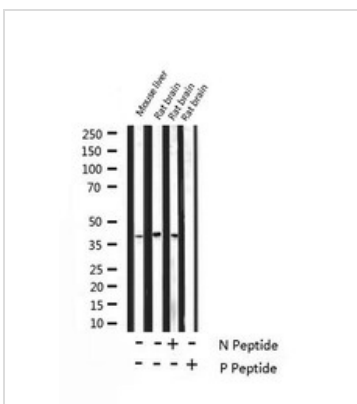

**GTX00803 ELISA Image**

ELISA analysis of phospho- and non phospho- immunogen peptide using GTX00803 DARPP-32 (phospho Thr75) antibody.

P-peptide : phospho-peptide

N-peptide : non-phospho-peptide

Peptides concentration : 1µg/ml


**GTX00803 WB Image**

WB analysis of mouse liver and rat brain tissue lysates using GTX00803 DARPP-32 (phospho Thr75) antibody pre-incubated with phospho- or non-phospho- peptide.

P-peptide : phospho-peptide

N-peptide : non-phospho-peptide



For full product information, images and publications, please visit our [website](https://www.genetex.com).