

ATF2 (phospho Thr69) antibody

Cat. No. GTX00805

Host	Rabbit
Clonality	Polyclonal
Isotype	IgG
Applications	WB, ICC/IF, IHC-P, ELISA
Reactivity	Human, Mouse, Rat

Package
100 µl

Applications

Application Note

*Optimal dilutions/concentrations should be determined by the researcher.

Suggested dilution	Recommended dilution
WB	1:500-1:2000
ICC/IF	1:100-1:500
IHC-P	1:50-1:200
ELISA	Assay dependent

Not tested in other applications.

Calculated MW 55 kDa. ([Note](#))

Properties

Form	Liquid
Buffer	PBS, 150mM NaCl, 50% Glycerol
Preservative	0.02% Sodium azide
Storage	Store as concentrated solution. Centrifuge briefly prior to opening vial. For short-term storage (1-2 weeks), store at 4°C. For long-term storage, aliquot and store at -20°C or below. Avoid multiple freeze-thaw cycles.
Concentration	1 mg/ml (Please refer to the vial label for the specific concentration.)
Immunogen	A synthesized peptide derived from human ATF2 around the phosphorylation site of Thr69.
Purification	Purified by sequential chromatography on phospho-peptide and non-phospho-peptide columns From serum
Conjugation	Unconjugated

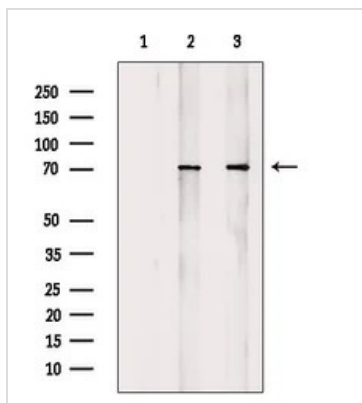


For full product information, images and publications, please visit our [website](#).

For laboratory research use only. Not for any clinical, therapeutic, or diagnostic use in humans or animals. Not for animal or human consumption.

Note

Purchasers shall not, and agree not to enable third parties to, analyze, copy, reverse engineer or otherwise attempt to determine the structure or sequence of the product.

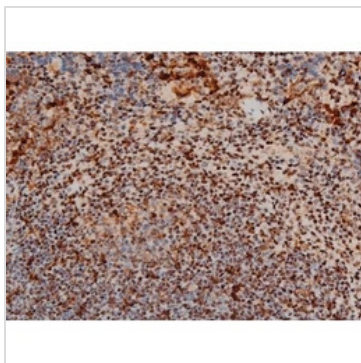
DATA IMAGES

GTX00805 WB Image

WB analysis of various sample lysates using GTX00805 ATF2 (phospho Thr69) antibody.

Lane 1 : Heat-shock treated MCF7 cells, blocked with antigen-specific peptides

Lane 2 : Heat-shock treated MCF7 cells

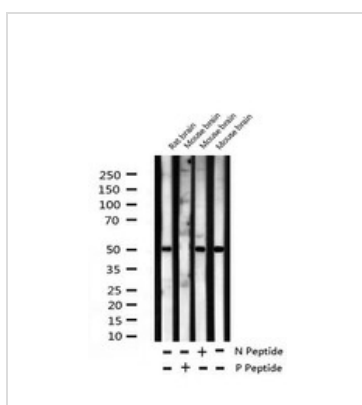
Lane 3 : Heat-shock treated HeLa cells


GTX00805 IHC-P Image

IHC-P analysis of mouse spleen tissue using GTX00805 ATF2 (phospho Thr69) antibody.

Antigen retrieval : Heat mediated antigen retrieval step in citrate buffer

Dilution : 1:200


GTX00805 WB Image

WB analysis of rat and mouse brain tissue lysates using GTX00805 ATF2 (phospho Thr69) antibody pre-incubated with phospho- or non-phospho- peptide.

P-peptide : phospho-peptide

N-peptide : non-phospho-peptide



For full product information, images and publications, please visit our [website](https://www.genetex.com).