

PACS2 antibody

Cat. No. GTX00808

Host	Rabbit
Clonality	Polyclonal
Isotype	IgG
Applications	WB, IHC-P
Reactivity	Human

Package
100 µl

Applications

Application Note

*Optimal dilutions/concentrations should be determined by the researcher.

Suggested dilution	Recommended dilution
WB	1:500-1:2000
IHC-P	1:50-1:200

Not tested in other applications.

Calculated MW 98 kDa. ([Note](#))

Product Note This antibody specifically detects endogenous levels of PACS2.

Properties

Form	Liquid
Buffer	PBS, 150mM NaCl, 50% Glycerol
Preservative	0.02% Sodium azide
Storage	Store as concentrated solution. Centrifuge briefly prior to opening vial. For short-term storage (1-2 weeks), store at 4°C. For long-term storage, aliquot and store at -20°C or below. Avoid multiple freeze-thaw cycles.
Concentration	1 mg/ml (Please refer to the vial label for the specific concentration.)
Immunogen	A synthesized peptide derived from human PACS2, corresponding to a region within the internal amino acids.
Purification	Purified by antigen-affinity chromatography From serum
Conjugation	Unconjugated

Note

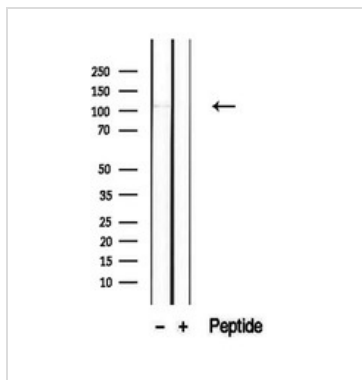
For laboratory research use only. Not for any clinical, therapeutic, or diagnostic use in humans or animals. Not for animal or human consumption.

Purchasers shall not, and agree not to enable third parties to, analyze, copy, reverse engineer or otherwise attempt to determine the structure or sequence of the product.

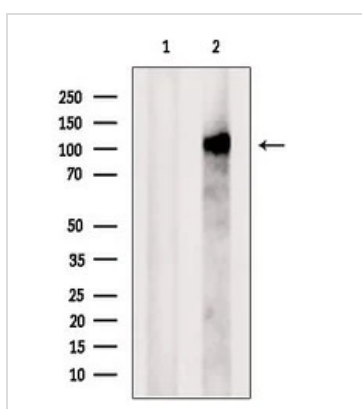


For full product information, images and publications, please visit our [website](#).

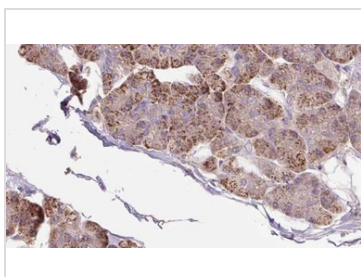
DATA IMAGES

**GTX00808 WB Image**

WB analysis of human brain tissue lysate using GTX00808 PACS2 antibody.

**GTX00808 WB Image**

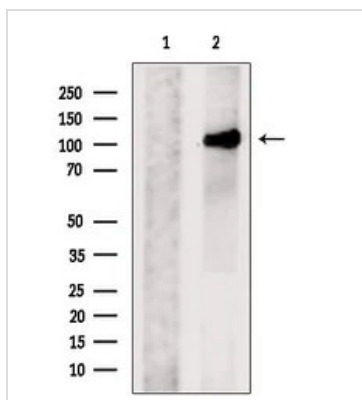
WB analysis of HeLa cell lysate using GTX00808 PACS2 antibody. The lane on the left was treated with blocking peptide.

**GTX00808 IHC-P Image**

IHC-P analysis of human pancreas cancer tissue using GTX00808 PACS2 antibody.

Antigen retrieval : Heat mediated antigen retrieval step in citrate buffer

Dilution : 1:100

**GTX00808 WB Image**

WB analysis of MCF7 cell lysate using GTX00808 PACS2 antibody. The lane on the left was treated with blocking peptide.



For full product information, images and publications, please visit our [website](#).