

# RUNX2 (phospho Ser275) antibody

**Cat. No. GTX00813**

<b>Host</b>	Rabbit
<b>Clonality</b>	Polyclonal
<b>Isotype</b>	IgG
<b>Applications</b>	WB, ICC/IF, IHC-P, ELISA
<b>Reactivity</b>	Human, Mouse, Rat

**Package**  
100 µl

## Applications

### Application Note

\*Optimal dilutions/concentrations should be determined by the researcher.

Suggested dilution	Recommended dilution
WB	1:500-1:2000
ICC/IF	1:100-1:500
IHC-P	1:50-1:200
ELISA	Assay dependent

Not tested in other applications.

**Calculated MW** 57 kDa. ( [Note](#) )

## Properties

<b>Form</b>	Liquid
<b>Buffer</b>	PBS, 150mM NaCl, 50% Glycerol
<b>Preservative</b>	0.02% Sodium azide
<b>Storage</b>	Store as concentrated solution. Centrifuge briefly prior to opening vial. For short-term storage (1-2 weeks), store at 4°C. For long-term storage, aliquot and store at -20°C or below. Avoid multiple freeze-thaw cycles.
<b>Concentration</b>	1 mg/ml (Please refer to the vial label for the specific concentration.)
<b>Immunogen</b>	A synthesized peptide derived from human RUNX2 around the phosphorylation site of Ser275.
<b>Purification</b>	Purified by sequential chromatography on phospho-peptide and non-phospho-peptide columns From serum
<b>Conjugation</b>	Unconjugated

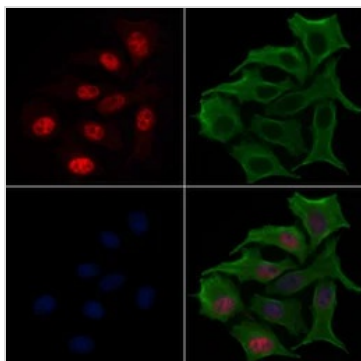


For full product information, images and publications, please visit our [website](#).

For laboratory research use only. Not for any clinical, therapeutic, or diagnostic use in humans or animals. Not for animal or human consumption.

**Note**

Purchasers shall not, and agree not to enable third parties to, analyze, copy, reverse engineer or otherwise attempt to determine the structure or sequence of the product.

**DATA IMAGES**

**GTx00813 ICC/IF Image**

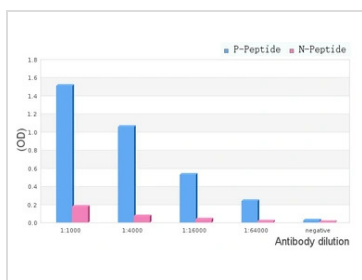
ICC/IF analysis of PFA-fixed HepG2 cells with serum starvation using GTx00813 RUNX2 (phospho Ser275) antibody.

Red : Primary antibody

Green : Tubulin

Permeabilization : 0.1% Triton X-100

Dilution : 1:200

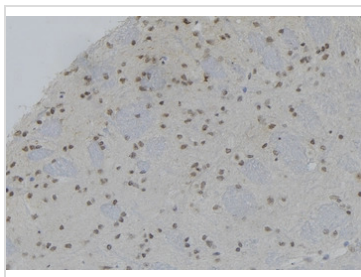

**GTx00813 ELISA Image**

ELISA analysis of phospho- and non phospho- immunogen peptide using GTx00813 RUNX2 (phospho Ser275) antibody.

P-peptide : phospho-peptide

N-peptide : non-phospho-peptide

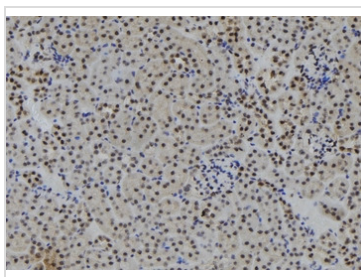
Peptides concentration : 1µg/ml


**GTx00813 IHC-P Image**

IHC-P analysis of rat brain tissue using GTx00813 RUNX2 (phospho Ser275) antibody.

Antigen retrieval : Heat mediated antigen retrieval step in citrate buffer

Dilution : 1:100


**GTx00813 IHC-P Image**

IHC-P analysis of mouse kidney tissue using GTx00813 RUNX2 (phospho Ser275) antibody.

Antigen retrieval : Heat mediated antigen retrieval step in citrate buffer

Dilution : 1:100



For full product information, images and publications, please visit our [website](https://www.genetex.com).