

## GPR43 antibody

Cat. No. GTX00816

Host	Rabbit
Clonality	Polyclonal
Isotype	IgG
Applications	WB, IHC-Fr
Reactivity	Mouse, Rat

## Package

50 µl

## Applications

## Application Note

\*Optimal dilutions/concentrations should be determined by the researcher.

Suggested dilution	Recommended dilution
WB	Assay dependent
IHC-Fr	Assay dependent

Not tested in other applications.

**Calculated MW** 37 kDa. ( [Note](#) )

## Product Note

This antibody is a highly selective antibody directed against an epitope of the rat Free fatty acid receptor 2. It has been designed to recognize FFAR2 from mouse and rat samples. The antibody is not suited to recognize FFAR2 from human samples.

## Properties

Form	Liquid
Buffer	PBS, 1% BSA
Preservative	0.05% Sodium azide
Storage	Store as concentrated solution. Centrifuge briefly prior to opening vial. For short-term storage (1-2 weeks), store at 4°C. For long-term storage, aliquot and store at -20°C or below. Avoid multiple freeze-thaw cycles.
Concentration	0.8 mg/ml (Please refer to the vial label for the specific concentration.)
Immunogen	Peptide (C)RGAEETVEGTKTDR, corresponding to amino acid residues 301-314 of rat intracellular, C-terminus FFAR2 (Accession Q76EI6).
Purification	Purified by antigen-affinity chromatography
Conjugation	Unconjugated

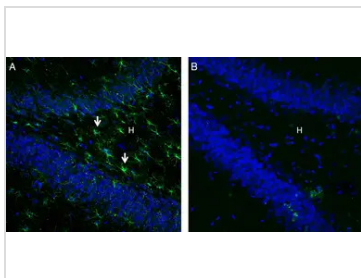


For full product information, images and publications, please visit our [website](#).

For laboratory research use only. Not for any clinical, therapeutic, or diagnostic use in humans or animals. Not for animal or human consumption.

**Note**

Purchasers shall not, and agree not to enable third parties to, analyze, copy, reverse engineer or otherwise attempt to determine the structure or sequence of the product.

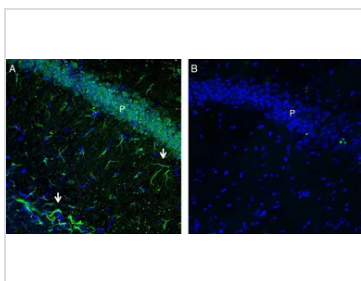
**DATA IMAGES**

**GTX00816 IHC-Fr Image**

IHC-Fr analysis of rat hippocampus using GTX00816 GPR43 antibody. Staining showed in rat hippocampus showed in astrocyte outlines (arrows) most intensely in the hilus (H). The staining result of antibody pre-incubate with blocking peptide showed in figure B.

Green : Primary antibody

Blue : DAPI

Dilution : 1:300

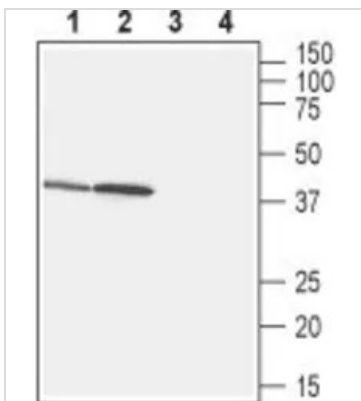

**GTX00816 IHC-Fr Image**

IHC-Fr analysis of mouse hippocampus using GTX00816 GPR43 antibody. Staining in the mouse hippocampus showed in the pyramidal layer (P) and in astrocyte outlines (arrows). The staining result of antibody pre-incubate with blocking peptide showed in figure B.

Green : Primary antibody

Blue : DAPI

Dilution : 1:300


**GTX00816 WB Image**

WB analysis of rat stomach (lanes 1 and 3) and small intestine (lanes 2 and 4) tissue lysates using GTX00816 GPR43 antibody.

Lane 1, 2 : Primary antibody

Lane 3, 4 : Primary antibody preincubated with the negative control antigen

Dilution : 1:500



For full product information, images and publications, please visit our [website](https://www.genetex.com).