

CLCN7 antibody

Cat. No. GTX00817

Host	Rabbit
Clonality	Polyclonal
Isotype	IgG
Application	WB
Reactivity	Mouse, Rat

Package

50 µl

APPLICATION

Application Note

*Optimal dilutions/concentrations should be determined by the researcher.

Suggested dilution	Recommended dilution
WB	Assay dependent
Not tested in other applications.	

Calculated MW 89 kDa. ([Note](#))

PROPERTIES

Form	Liquid
Buffer	PBS, 1% BSA
Preservative	0.05% Sodium azide
Storage	Store as concentrated solution. Centrifuge briefly prior to opening vial. For short-term storage (1-2 weeks), store at 4°C. For long-term storage, aliquot and store at -20°C or below. Avoid multiple freeze-thaw cycles.
Concentration	0.8 mg/ml (Please refer to the vial label for the specific concentration.)
Immunogen	Peptide (C)KDLARYRLGKGGLE, corresponding to amino acid residues 783-796 of rat intracellular, C-terminal CLC-7 (Accession P51799).
Purification	Purified by antigen-affinity chromatography
Conjugation	Unconjugated

Note

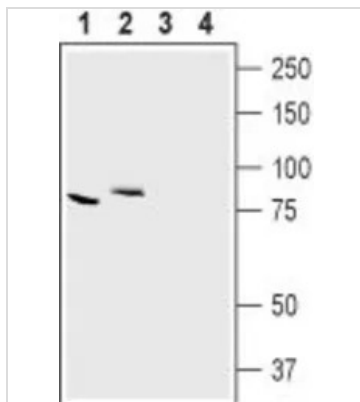
For laboratory research use only. Not for any clinical, therapeutic, or diagnostic use in humans or animals. Not for animal or human consumption.

Purchasers shall not, and agree not to enable third parties to, analyze, copy, reverse engineer or otherwise attempt to determine the structure or sequence of the product.



For full product information, images and publications, please visit our [website](#).

DATA IMAGES



GTX00817 WB Image

WB analysis of mouse kidney (lanes 1 and 3) and rat brain (lanes 2 and 4) tissue lysates using GTX00817 CLCN7 antibody.

Lane 1, 2 : Primary antibody

Lane 3, 4 : Primary antibody preincubated with the negative control antigen

Dilution : 1:200



For full product information, images and publications, please visit our [website](https://www.genetex.com).