

CITED1 antibody

Cat. No. GTX00820

Host	Rabbit
Clonality	Polyclonal
Isotype	IgG
Application	WB, IHC-P
Reactivity	Human, Rat

Package
100 µl

APPLICATION

Application Note

*Optimal dilutions/concentrations should be determined by the researcher.

Suggested dilution	Recommended dilution
WB	1:300-1:1000
IHC-P	1:200-1:400

Not tested in other applications.

Calculated MW 20 kDa. ([Note](#))

PROPERTIES

Form	Liquid
Buffer	Aqueous buffered solution, 1% BSA, 50% Glycerol
Preservative	0.09% Sodium azide
Storage	Store as concentrated solution. Centrifuge briefly prior to opening vial. For short-term storage (1-2 weeks), store at 4°C. For long-term storage, aliquot and store at -20°C or below. Avoid multiple freeze-thaw cycles.
Concentration	1 mg/ml (Please refer to the vial label for the specific concentration.)
Immunogen	KLH conjugated synthetic peptide derived from human CITED1 (150-193 a.a.).
Purification	Protein A purified
Conjugation	Unconjugated

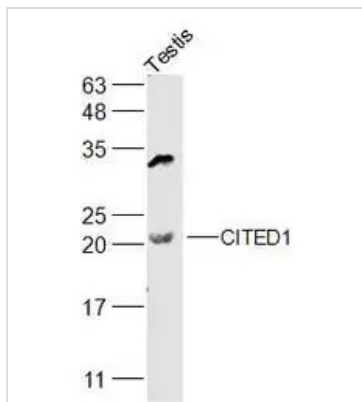
Note

For laboratory research use only. Not for any clinical, therapeutic, or diagnostic use in humans or animals. Not for animal or human consumption.

Purchasers shall not, and agree not to enable third parties to, analyze, copy, reverse engineer or otherwise attempt to determine the structure or sequence of the product.

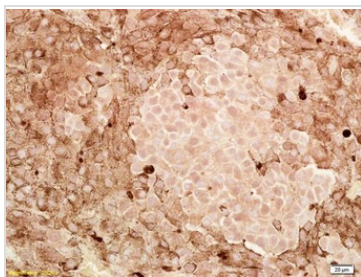


For full product information, images and publications, please visit our [website](#).

DATA IMAGES

GTx00820 WB Image

WB analysis of rat testis tissue lysate using GTx00820 CITED1 antibody.

Dilution : 1:500


GTx00820 IHC-P Image

IHC-P analysis of human melanoma tissue using GTx00820 CITED1 antibody.

Dilution : 1:200



For full product information, images and publications, please visit our [website](#).