

RELM alpha antibody

Cat. No. GTX00822

Host	Rabbit
Clonality	Polyclonal
Isotype	IgG
Applications	WB, ICC/IF
Reactivity	Mouse, Rat

Package
100 µl

Applications

Application Note

*Optimal dilutions/concentrations should be determined by the researcher.

Suggested dilution	Recommended dilution
WB	1:300-1:1000
ICC/IF	1:50-1:200

Not tested in other applications.

Calculated MW 12 kDa. ([Note](#))

Properties

Form	Liquid
Buffer	Aqueous buffered solution, 1% BSA, 50% Glycerol
Preservative	0.09% Sodium azide
Storage	Store as concentrated solution. Centrifuge briefly prior to opening vial. For short-term storage (1-2 weeks), store at 4°C. For long-term storage, aliquot and store at -20°C or below. Avoid multiple freeze-thaw cycles.
Concentration	1 mg/ml (Please refer to the vial label for the specific concentration.)
Immunogen	KLH conjugated synthetic peptide derived from mouse RELMa (60-90 a.a.).
Purification	Protein A purified
Conjugation	Unconjugated

Note

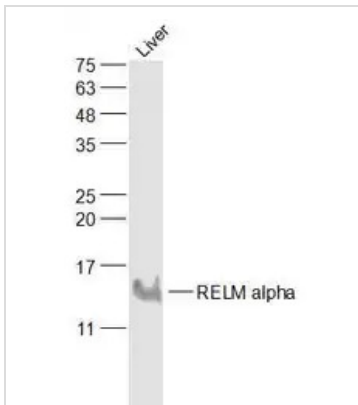
For laboratory research use only. Not for any clinical, therapeutic, or diagnostic use in humans or animals. Not for animal or human consumption.

Purchasers shall not, and agree not to enable third parties to, analyze, copy, reverse engineer or otherwise attempt to determine the structure or sequence of the product.



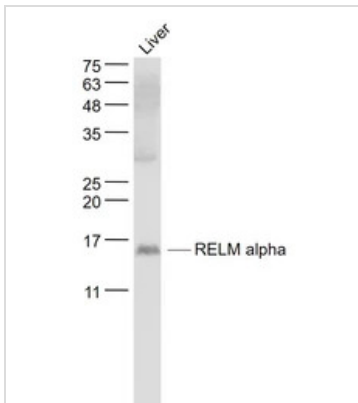
For full product information, images and publications, please visit our [website](#).

DATA IMAGES

**GTX00822 WB Image**

WB analysis of mouse liver tissue lysate using GTX00822 RELM alpha antibody.

Dilution : 1:1000

**GTX00822 WB Image**

WB analysis of mouse liver tissue lysate using GTX00822 RELM alpha antibody.

Dilution : 1:1000



For full product information, images and publications, please visit our [website](#).