

## GPR43 antibody

Cat. No. GTX00823

<b>Host</b>	Rabbit
<b>Clonality</b>	Polyclonal
<b>Isotype</b>	IgG
<b>Applications</b>	WB, IHC-P, FCM
<b>Reactivity</b>	Human, Mouse

References ( 1 )  
 Package  
 100 µl

## Applications

## Application Note

\*Optimal dilutions/concentrations should be determined by the researcher.

Suggested dilution	Recommended dilution
WB	1:300-1:1000
IHC-P	1:200-1:400
FCM	Assay dependent

Not tested in other applications.

**Calculated MW** 37 kDa. ( [Note](#) )

## Properties

<b>Form</b>	Liquid
<b>Buffer</b>	Aqueous buffered solution, 1% BSA, 50% Glycerol
<b>Preservative</b>	0.09% Sodium azide
<b>Storage</b>	Store as concentrated solution. Centrifuge briefly prior to opening vial. For short-term storage (1-2 weeks), store at 4°C. For long-term storage, aliquot and store at -20°C or below. Avoid multiple freeze-thaw cycles.
<b>Concentration</b>	1 mg/ml (Please refer to the vial label for the specific concentration.)
<b>Immunogen</b>	KLH conjugated synthetic peptide derived from human GPR43 (63-84 a.a.).
<b>Purification</b>	Protein A purified
<b>Conjugation</b>	Unconjugated

## Note

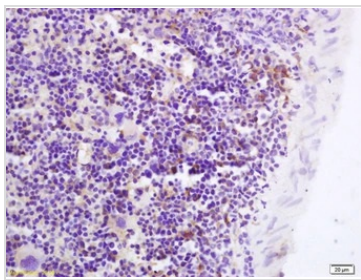
For laboratory research use only. Not for any clinical, therapeutic, or diagnostic use in humans or animals. Not for animal or human consumption.

Purchasers shall not, and agree not to enable third parties to, analyze, copy, reverse engineer or otherwise attempt to determine the structure or sequence of the product.



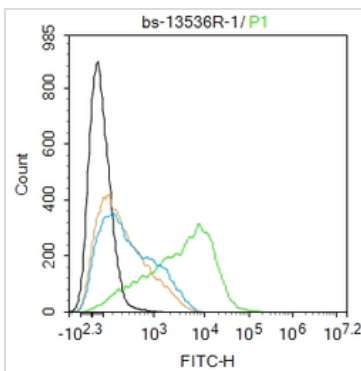
For full product information, images and publications, please visit our [website](#).

DATA IMAGES



**GTX00823 IHC-P Image**

IHC-P analysis of mouse spleen tissue using GTX00823 GPR43 antibody.  
Dilution : 1:200



**GTX00823 FCM Image**

FCM analysis of THP-1 cells using GTX00823 GPR43 antibody.  
Green line : Primary antibody  
Orange line : Isotype control  
Dilution : 1:100



For full product information, images and publications, please visit our [website](#).