

RBMS3 antibody

Cat. No. GTX00828

Host	Rabbit
Clonality	Polyclonal
Isotype	IgG
Applications	WB, ICC/IF, IHC-P, ELISA
Reactivity	Human, Mouse, Rat

Package
100 µg

Applications

Application Note

*Optimal dilutions/concentrations should be determined by the researcher.

Suggested dilution	Recommended dilution
WB	0.1-0.5µg/ml
ICC/IF	2µg/ml
IHC-P	0.5-1µg/ml
ELISA	0.1-0.5µg/ml

Note : Recommend using heat mediated antigen retrieval.

Not tested in other applications.

Calculated MW 48 kDa. ([Note](#))

Properties

Form	Liquid
Buffer	4mg Trehalose, 0.9mg NaCl, 0.2mg Na ₂ HPO ₄
Preservative	0.05mg Sodium azide
Storage	Store as concentrated solution. Centrifuge briefly prior to opening vial. For short-term storage (1-2 weeks), store at 4°C. For long-term storage, aliquot and store at -20°C or below. Avoid multiple freeze-thaw cycles.
Concentration	0.5 mg/ml (Please refer to the vial label for the specific concentration.)
Immunogen	E.coli-derived human RBMS3 recombinant protein (Position: T350-P437).
Purification	Purified by antigen-affinity chromatography
Conjugation	Unconjugated



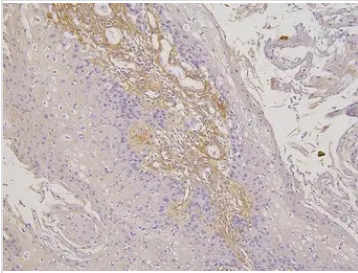
For full product information, images and publications, please visit our [website](#).

For laboratory research use only. Not for any clinical, therapeutic, or diagnostic use in humans or animals. Not for animal or human consumption.

Note

Purchasers shall not, and agree not to enable third parties to, analyze, copy, reverse engineer or otherwise attempt to determine the structure or sequence of the product.

DATA IMAGES

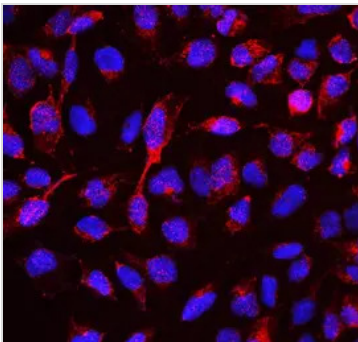


GTx00828 IHC-P Image

IHC-P analysis of human oesophagus squama cancer tissue using GTx00828 RBMS3 antibody.

Antigen retrieval : Heat mediated antigen retrieval was performed in citrate buffer (pH6, epitope retrieval solution) for 20 mins

Dilution : 1µg/mL



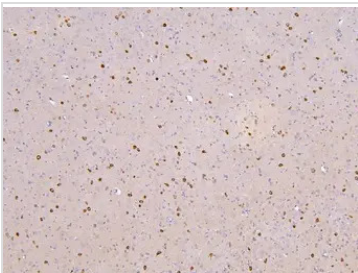
GTx00828 ICC/IF Image

ICC/IF analysis of U2OS cells using GTx00828 RBMS3 antibody. Enzyme antigen retrieval was performed for 15 mins.

Red : Primary antibody

Blue : DAPI

Dilution : 2µg/mL

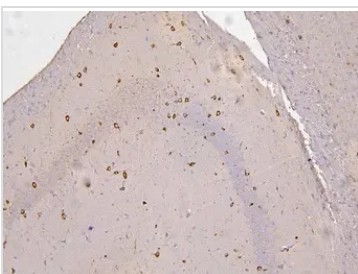


GTx00828 IHC-P Image

IHC-P analysis of rat brain tissue using GTx00828 RBMS3 antibody.

Antigen retrieval : Heat mediated antigen retrieval was performed in citrate buffer (pH6, epitope retrieval solution) for 20 mins

Dilution : 1µg/mL



GTx00828 IHC-P Image

IHC-P analysis of mouse brain tissue using GTx00828 RBMS3 antibody.

Antigen retrieval : Heat mediated antigen retrieval was performed in citrate buffer (pH6, epitope retrieval solution) for 20 mins

Dilution : 1µg/mL



For full product information, images and publications, please visit our [website](#).