

TGF beta Receptor I antibody

Cat. No. GTX00840

Host	Rabbit
Clonality	Polyclonal
Isotype	IgG
Application	WB, ICC/IF, IHC-P
Reactivity	Human, Mouse, Rat

Package
100 µl

APPLICATION

Application Note

*Optimal dilutions/concentrations should be determined by the researcher.

Suggested dilution	Recommended dilution
WB	1:500 - 1:2000
ICC/IF	1:100-1:500
IHC-P	1:50 - 1:200

Not tested in other applications.

Calculated MW 56 kDa. ([Note](#))

PROPERTIES

Form	Liquid
Buffer	PBS, 150mM NaCl, 50% Glycerol
Preservative	0.02% Sodium azide
Storage	Store as concentrated solution. Centrifuge briefly prior to opening vial. For short-term storage (1-2 weeks), store at 4°C. For long-term storage, aliquot and store at -20°C or below. Avoid multiple freeze-thaw cycles.
Concentration	1 mg/ml (Please refer to the vial label for the specific concentration.)
Immunogen	A synthesized peptide derived from human TGF beta Receptor I , corresponding to a region within the internal amino acids.
Purification	Purified by antigen-affinity chromatography From serum
Conjugation	Unconjugated

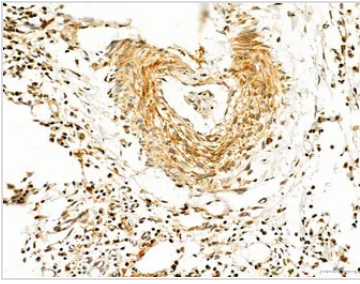
Note

For laboratory research use only. Not for any clinical, therapeutic, or diagnostic use in humans or animals. Not for animal or human consumption.

Purchasers shall not, and agree not to enable third parties to, analyze, copy, reverse engineer or otherwise attempt to determine the structure or sequence of the product.

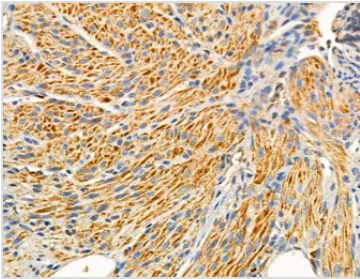


For full product information, images and publications, please visit our [website](#).

DATA IMAGES

GTX00840 IHC-P Image

IHC-P analysis of human colorectal cancer using GTX00840 TGF beta Receptor I antibody. The sample was formaldehyde fixed and a heat mediated antigen retrieval step in citrate buffer was performed.

Dilution : 1:100


GTX00840 IHC-P Image

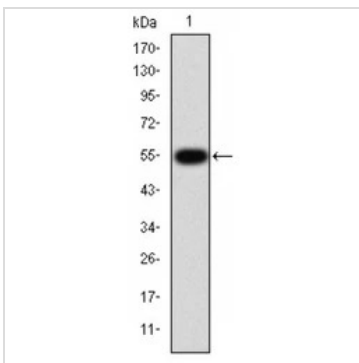
IHC-P analysis of mouse ovary tissue using GTX00840 TGF beta Receptor I antibody. The sample was formaldehyde fixed and a heat mediated antigen retrieval step in citrate buffer was performed.

Dilution : 1:100


GTX00840 IHC-P Image

IHC-P analysis of rat brain tissue using GTX00840 TGF beta Receptor I antibody. The sample was formaldehyde fixed and a heat mediated antigen retrieval step in citrate buffer was performed.

Dilution : 1:100


GTX00840 WB Image

WB analysis of HepG2 cell lysate using GTX00840 TGF beta Receptor I antibody.



For full product information, images and publications, please visit our [website](https://www.genetex.com).