

# SUMO1 antibody [4D12] (FITC)

**Cat. No. GTX00842**

|                     |                           |
|---------------------|---------------------------|
| <b>Host</b>         | Rat                       |
| <b>Clonality</b>    | Monoclonal                |
| <b>Isotype</b>      | IgG2a                     |
| <b>Applications</b> | ICC/IF, IHC-Fr            |
| <b>Reactivity</b>   | Human, Mouse, Rat, Simian |

**Package**  
50 µg

## Applications

### Application Note

\*Optimal dilutions/concentrations should be determined by the researcher.

| Suggested dilution | Recommended dilution |
|--------------------|----------------------|
| ICC/IF             | 1:100                |
| IHC-Fr             | 1:100                |

Not tested in other applications.

## Properties

|                      |  |
|----------------------|--|
| <b>Form</b>          | Liquid   |
| <b>Buffer</b>        | Filter-sterilized PBS, 50% Glycerol  |
| <b>Preservative</b>  | No preservatives   |
| <b>Storage</b>       | Store as concentrated solution. Centrifuge briefly prior to opening vial. For short-term storage (1-2 weeks), store at 4°C. For long-term storage, aliquot and store at -20°C or below. Avoid multiple freeze-thaw cycles. |
| <b>Concentration</b> | 1 mg/ml (Please refer to the vial label for the specific concentration.)   |
| <b>Immunogen</b>     | Recombinant GST-fused human SUMO1 (full length)  |
| <b>Purification</b>  | Purified IgG<br>From culture supernatant   |
| <b>Conjugation</b>   | Fluorescein isothiocyanate (FITC) <a href="#">Wavelength</a>   |

### Note

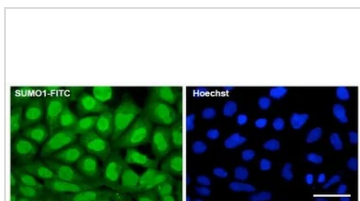
For laboratory research use only. Not for any clinical, therapeutic, or diagnostic use in humans or animals. Not for animal or human consumption.

Purchasers shall not, and agree not to enable third parties to, analyze, copy, reverse engineer or otherwise attempt to determine the structure or sequence of the product.



For full product information, images and publications, please visit our [website](#).

## DATA IMAGES


**GTX00842 ICC/IF Image**

ICC/IF analysis of HEK293A cell using GTX00842 SUMO1 antibody [4D12] (FITC).

Scale bar : 50 mm

Dilution : 1:50



For full product information, images and publications, please visit our [website](#).