

5-Methylcytosine / 5-mC antibody [5MC-CD] (FITC)

Cat. No. GTX00845

Host	Mouse
Clonality	Monoclonal
Isotype	IgM
Applications	ICC/IF, Dot
Reactivity	Species independent

Package
50 µg

Applications

Application Note

*Optimal dilutions/concentrations should be determined by the researcher.

Suggested dilution	Recommended dilution
ICC/IF	1:50-1:100
Dot	~1:1000

Not tested in other applications.

Properties

Form	Liquid
Buffer	Filter-sterilized PBS, 50% Glycerol
Preservative	No preservatives
Storage	Store as concentrated solution. Centrifuge briefly prior to opening vial. For short-term storage (1-2 weeks), store at 4°C. For long-term storage, aliquot and store at -20°C or below. Avoid multiple freeze-thaw cycles.
Concentration	1 mg/ml (Please refer to the vial label for the specific concentration.)
Immunogen	5-Methylcytosine conjugated to bovine serum albumin
Purification	Purified IgM
Conjugation	Fluorescein isothiocyanate (FITC) Wavelength

Note

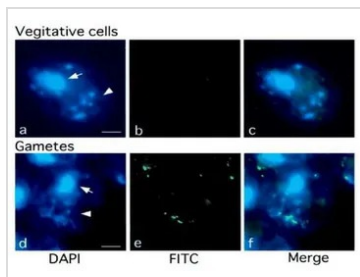
For laboratory research use only. Not for any clinical, therapeutic, or diagnostic use in humans or animals. Not for animal or human consumption.

Purchasers shall not, and agree not to enable third parties to, analyze, copy, reverse engineer or otherwise attempt to determine the structure or sequence of the product.



For full product information, images and publications, please visit our [website](#).

DATA IMAGES



GTX00845 ICC/IF Image

ICC/IF analysis of *Chlamidomonas me-1* cells using GTX00845 5-Methylcytosine / 5-mC antibody [5MC-CD] (FITC). Chloroplast DNA is exclusively methylated in gamete cells.



For full product information, images and publications, please visit our [website](https://www.genetex.com).