

Prion Protein (PrP) antibody [2C5-5]

Cat. No. GTX00856

Host	Mouse
Clonality	Monoclonal
Isotype	IgG1
Applications	WB, ELISA
Reactivity	Human

Package
50 µg

Applications

Application Note

*Optimal dilutions/concentrations should be determined by the researcher.

Suggested dilution	Recommended dilution
WB	~0.5 µg /ml
ELISA	Assay dependent

Not tested in other applications.

Product Note We do not recommend use of this product for Mouse samples.

Properties

Form	Liquid
Buffer	Filter-sterilized PBS, 50% Glycerol
Preservative	No preservatives
Storage	Store as concentrated solution. Centrifuge briefly prior to opening vial. For short-term storage (1-2 weeks), store at 4°C. For long-term storage, aliquot and store at -20°C or below. Avoid multiple freeze-thaw cycles.
Concentration	1 mg/ml (Please refer to the vial label for the specific concentration.)
Immunogen	Recombinant human PrP lacking GPI anchor expressed and purified from rabbit kidney cell line RK13
Purification	Purified IgG
Conjugation	Unconjugated

Note

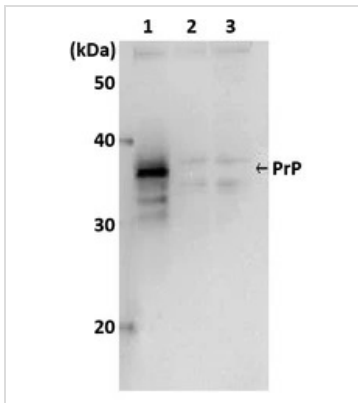
For laboratory research use only. Not for any clinical, therapeutic, or diagnostic use in humans or animals. Not for animal or human consumption.

Purchasers shall not, and agree not to enable third parties to, analyze, copy, reverse engineer or otherwise attempt to determine the structure or sequence of the product.



For full product information, images and publications, please visit our [website](#).

DATA IMAGES

**GTX00856 WB Image**

WB analysis of various samples using GTX00856 Prion Protein (PrP) antibody [2C5-5].

Lane 1 : Prion protein was overexpressed in RK13 cells

Lane 2 : Vector only in RK13 cells

Lane 3 : RK13 cells only



For full product information, images and publications, please visit our [website](#).