

Salmonella enteritidis LPS antibody [se-1]

Cat. No. GTX00861

Host	Mouse
Clonality	Monoclonal
Isotype	IgG1
Application	WB, Dot, ELISA, Lateral Flow
Reactivity	Salmonella typhimurium, Salmonella Enteritidis

Package
100 µg

APPLICATION

Application Note

*Optimal dilutions/concentrations should be determined by the researcher.

Suggested dilution	Recommended dilution
WB	1:1000-1:2000
Dot	Assay dependent
ELISA	Assay dependent
Lateral Flow	Assay dependent

Not tested in other applications.

Product Note

It does not react with other gram-negative food-poisoning bacteria like E. coli, Vibrio parahaemolyticus, and Campylobacter species.

PROPERTIES

Form	Liquid
Buffer	Filter-sterilized PBS, 50% Glycerol
Preservative	No preservative
Storage	Store as concentrated solution. Centrifuge briefly prior to opening vial. For short-term storage (1-2 weeks), store at 4°C. For long-term storage, aliquot and store at -20°C or below. Avoid multiple freeze-thaw cycles.
Concentration	0.5 mg/ml (Please refer to the vial label for the specific concentration.)
Immunogen	Crude extract of Salmonella Enteritidis
Purification	Protein A purified
Conjugation	Unconjugated



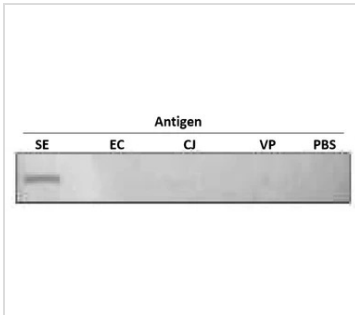
For full product information, images and publications, please visit our [website](#).

Date 2024 / 05 / 19 Page 1 of 2

For laboratory research use only. Not for any clinical, therapeutic, or diagnostic use in humans or animals. Not for animal or human consumption.

Note

Purchasers shall not, and agree not to enable third parties to, analyze, copy, reverse engineer or otherwise attempt to determine the structure or sequence of the product.

DATA IMAGES

GTX00861 Dot Image

Extracts of each strain of food poisoning bacteria were coated onto 5 area of a nitrocellulose membrane and reacted with GTX00861 Salmonella enteritidis LPS antibody [se-1].

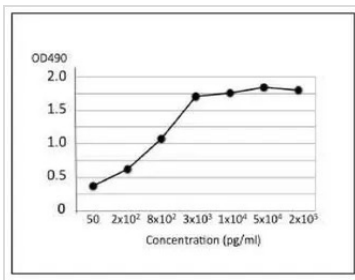
GTX00861 recognizes LPS of S. Enteritidis, but does not react with any non-Salmonella bacteria tested.

SE: S. Enteritidis

EC: E. coli

CJ: Campylobacter jejuni

VP: V. parahaemolyticus.


GTX00861 ELISA Image

ELISA analysis of crude extract of S. Enteritidis using GTX00861 Salmonella enteritidis LPS antibody [se-1].

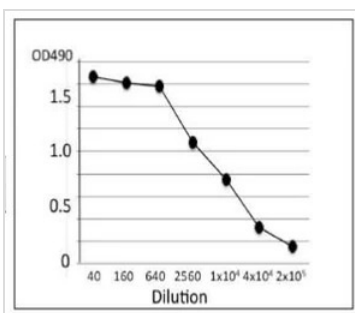
Protein coating amount : 100µl per well at indicated amount

Antibody amount : 100µl (1:500) per well

	ELISA	WB
Salmonella Enteritidis (ATCC13076)	+	LPS
Other 18 isolated strains	+	+
Salmonella Typhimurium	+	-
Campylobacter jejuni/coli	-	-
Vibrio parahaemolyticus	-	-
Escherichia coli (ETEC)	-	-
EHEC (O157:H7)	-	-
Staphylococcus aureus	-	-
Clostridium perfringens	-	-
Bacillus cereus	-	-
LPS from S. Enteritidis*	+	LPS
Purified LPS (from S. Enteritidis)	+	LPS

GTX00861 Image

Reactivity of GTX00861 Salmonella enteritidis LPS antibody [se-1] with various food poisoning bacteria.


GTX00861 ELISA Image

ELISA analysis of crude extract of S. Enteritidis using GTX00861 Salmonella enteritidis LPS antibody [se-1].

Protein coating amount : 100µl (1 µg/ml) per well

Antibody amount : 100µl at indicated dilution



For full product information, images and publications, please visit our [website](https://www.genetex.com).