

Verotoxin / Shiga toxin (SLT-1 + SLT-2) subunit A antibody [vero-01]

Cat. No. GTX00863

Host	Mouse
Clonality	Monoclonal
Isotype	IgG1
Applications	WB, ELISA, Lateral Flow
Reactivity	Campylobacter jejuni, E. coli, Staphylococcus aureus, Salmonella Enteritidis

Package
100 µg

Applications

Application Note

*Optimal dilutions/concentrations should be determined by the researcher.

Suggested dilution	Recommended dilution
WB	1:500-1:1000
ELISA	Assay dependent
Lateral Flow	Assay dependent

Not tested in other applications.

Product Note It reacts with subunit A of VT1, VT2 and Stx.

Properties

Form	Liquid
Buffer	Filter-sterilized PBS, 50% Glycerol
Preservative	No preservative
Storage	Store as concentrated solution. Centrifuge briefly prior to opening vial. For short-term storage (1-2 weeks), store at 4°C. For long-term storage, aliquot and store at -20°C or below. Avoid multiple freeze-thaw cycles.
Concentration	1 mg/ml (Please refer to the vial label for the specific concentration.)
Immunogen	Culture supernatant of E. coli 0111 (EHEC strain)
Purification	Protein A purified
Conjugation	Unconjugated

Note

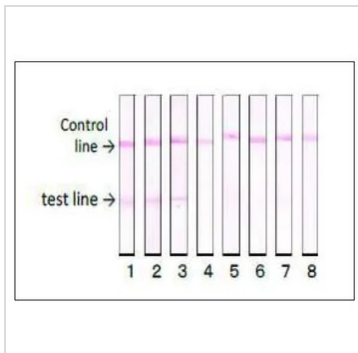
For laboratory research use only. Not for any clinical, therapeutic, or diagnostic use in humans or animals. Not for animal or human consumption.

Purchasers shall not, and agree not to enable third parties to, analyze, copy, reverse engineer or otherwise attempt to determine the structure or sequence of the product.

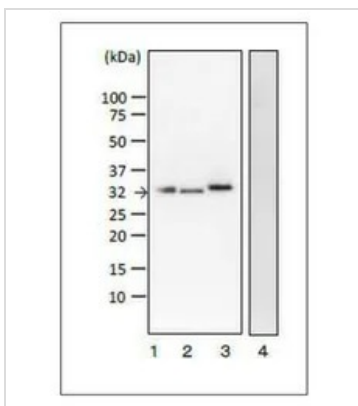


For full product information, images and publications, please visit our [website](#).

Date 2025 / 07 / 12 Page 1 of 2

DATA IMAGES

GTX00863 Lateral Flow Image

Reactivity of GTX00863 E. coli SLT-1 + SLT-2 antibody [vero-01] with various food poisoning bacteria in immunochromatographic strip test. GTX64191 Vero Toxin1 (E. coli) / Shiga Toxin (S. dysenteriae) antibody was coated onto a specific area (test line) of a nitrocellulose membrane, while goat anti-mouse IgG was coated onto another specific area (control line) on the same membrane. Extract of each strain of food poisoning bacteria was mixed with the monoclonal antibody conjugated with colloidal gold. The strip was soaked in the mixture and reacted. (1) E. coli O26, (2) E. coli O111, (3) E. coli O157:H7, (4) E. coli K12, (5) Salmonella Enteritidis, (6) Campylobacter jejuni, (7) Staphylococcus aureus, (8) PBS. MAb (vero-1) reacted with EHEC strains, O26, O111 and O157:H7, but not with other food poisoning bacteria.


GTX00863 WB Image

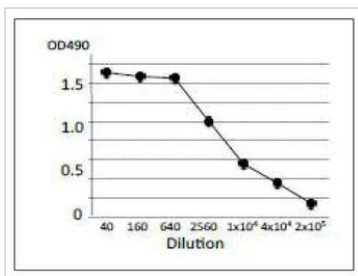
WB analysis of various samples using GTX00863 Verotoxin / Shiga toxin (SLT-1 + SLT-2) subunit A antibody [vero-01]. Arrow shows subunit A (32kDa) of VT1 and VT2.

Lane 1 : Culture medium of E. coli O157:H7

Lane 2 : Purified VT1

Lane 3 : Purified VT2

Lane 4 : VT non-producing E. coli


GTX00863 ELISA Image

ELISA analysis of crude extract of E.coli O157:H7 using GTX00863 Verotoxin / Shiga toxin (SLT-1 + SLT-2) subunit A antibody [vero-01].

Protein coating amount : 100µl (1 µg/ml) per well

Antibody amount : 100µl at indicated dilution



For full product information, images and publications, please visit our [website](http://www.genetex.com).