

Bacillus cereus phospholipase C antibody [bc-01]

Cat. No. GTX00866

Host	Mouse
Clonality	Monoclonal
Isotype	IgM
Application	WB, ELISA
Reactivity	Clostridium perfringens, Bacillus cereus

Package
100 µg

APPLICATION

Application Note

*Optimal dilutions/concentrations should be determined by the researcher.

Suggested dilution	Recommended dilution
WB	1:500-1:1000
ELISA	Assay dependent

Not tested in other applications.

PROPERTIES

Form	Liquid
Buffer	Filter-sterilized PBS, 50% Glycerol
Preservative	No preservative
Storage	Store as concentrated solution. Centrifuge briefly prior to opening vial. For short-term storage (1-2 weeks), store at 4°C. For long-term storage, aliquot and store at -20°C or below. Avoid multiple freeze-thaw cycles.
Concentration	1 mg/ml (Please refer to the vial label for the specific concentration.)
Immunogen	Culture supernatant of B. cereus
Purification	Purified IgM
Conjugation	Unconjugated

Note

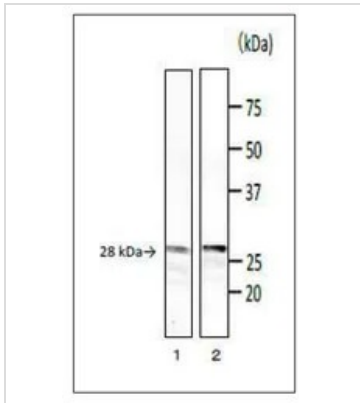
For laboratory research use only. Not for any clinical, therapeutic, or diagnostic use in humans or animals. Not for animal or human consumption.

Purchasers shall not, and agree not to enable third parties to, analyze, copy, reverse engineer or otherwise attempt to determine the structure or sequence of the product.



For full product information, images and publications, please visit our [website](#).

DATA IMAGES



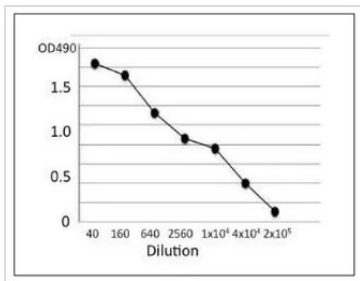
GTx00866 WB Image

WB analysis of various samples using GTx00866 *Bacillus cereus* phospholipase C antibody [bc-01].

Lane 1 : Culture medium of *B. cereus*

Lane 2 : PC-PLC purified from *B. cereus*

Dilution : 1:1000



GTx00866 ELISA Image

ELISA analysis of crude extract of *B. cereus* using GTx00866 *Bacillus cereus* phospholipase C antibody [bc-01].

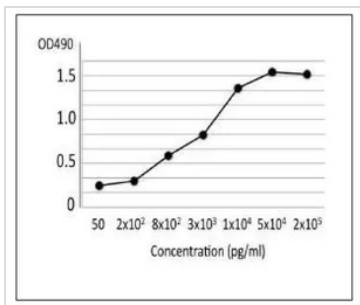
Protein coating amount : 100µl (1 µg/ml) per well

Antibody amount : 100µl at indicated dilution

	ELISA	WB
<i>Bacillus cereus</i> (NBRC15306)	+	28K
Other 5 isolated strains	+	
<i>Bacillus subtilis</i>	—	
<i>Staphylococcus aureus</i>	—	
<i>Salmonella Enteritidis</i>	—	—
<i>Escherichia coli</i> (ETEC)	—	—
<i>E. coli</i> O157:H7 (EHEC)	—	
Purified PLC (from <i>B. cereus</i>)	+	28K
PLC : Phospholipase C		

GTx00866 Image

Reactivities of GTx00866 *Bacillus cereus* phospholipase C antibody [bc-01] with various food poisoning bacter. GTx00866 reacts with a standard strain of *B. cereus* (NBRC15306), 5 isolated strains, and both PLC of *B. cereus* and α -toxin of *C. perfringens*. Antibody reacts with *C. perfringens*, but not with any other food poisoning bacteria. Protein bands, 28 kDa and 43kDa sizes correspond to the expected sizes of the *B. cereus* PLC and *C. perfringens* α -toxin, respectively.



GTx00866 ELISA Image

ELISA analysis of crude extract of *B. cereus* using GTx00866 *Bacillus cereus* phospholipase C antibody [bc-01].

Protein coating amount : 100µl per well at indicated amount

Antibody amount : 100µl (1:500) per well



For full product information, images and publications, please visit our [website](https://www.genetex.com).