

# Campylobacter Porin antibody [cj-01]

**Cat. No. GTX00867**

<b>Host</b>	Mouse
<b>Clonality</b>	Monoclonal
<b>Isotype</b>	IgG1
<b>Applications</b>	WB, Dot, ELISA, Lateral Flow
<b>Reactivity</b>	Campylobacter jejuni, E. coli, Vibrio parahaemolyticus, Salmonella Enteritidis, Campylobacter coli

**Package**  
100 µg

## Applications

### Application Note

\*Optimal dilutions/concentrations should be determined by the researcher.

Suggested dilution	Recommended dilution
WB	1:500-1:1000
Dot	Assay dependent
ELISA	Assay dependent
Lateral Flow	Assay dependent

Not tested in other applications.

**Product Note** It reacts with C. jejuni major antigen of 43 kDa.

## Properties

<b>Form</b>	Liquid
<b>Buffer</b>	Filter-sterilized PBS, 50% Glycerol
<b>Preservative</b>	No preservatives
<b>Storage</b>	Store as concentrated solution. Centrifuge briefly prior to opening vial. For short-term storage (1-2 weeks), store at 4°C. For long-term storage, aliquot and store at -20°C or below. Avoid multiple freeze-thaw cycles.
<b>Concentration</b>	1 mg/ml (Please refer to the vial label for the specific concentration.)
<b>Immunogen</b>	Crude extract of Campylobacter jejuni
<b>Purification</b>	Protein A purified
<b>Conjugation</b>	Unconjugated

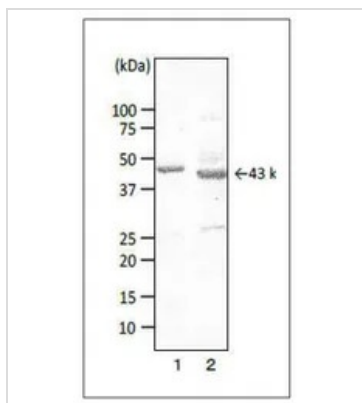


For full product information, images and publications, please visit our [website](#).

For laboratory research use only. Not for any clinical, therapeutic, or diagnostic use in humans or animals. Not for animal or human consumption.

**Note**

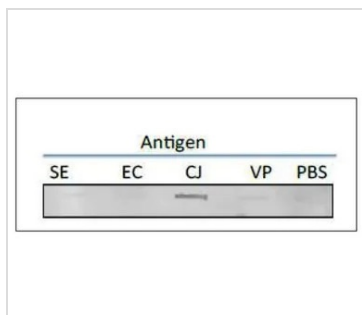
Purchasers shall not, and agree not to enable third parties to, analyze, copy, reverse engineer or otherwise attempt to determine the structure or sequence of the product.

**DATA IMAGES**

**GTX00867 WB Image**

WB analysis of various samples using GTX00867 Campylobacter Porin antibody [cj-01]. It recognizes porins in extracts of *C. coli* and *C. jejuni* as 44 kDa protein and 43 kDa protein, respectively.

Lane 1 : Crude extract of *Campylobacter coli*

Lane 2 : Crude extract of *Campylobacter jejuni*


**GTX00867 Dot Image**

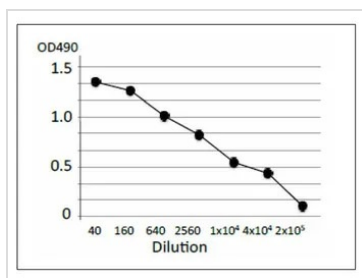
Test of reactivity of GTX00867 Campylobacter Porin antibody [cj-01] with several food poisoning bacteria in slot blot test. Extract of each strain of food poisoning bacteria was coated onto 5 areas of a nitrocellulose membrane and reacted with GTX00867. GTX00867 specifically reacts with extract of *C. jejuni*.

SE: *Salmonella Enteritidis*

EC: *Escherichia coli*

CJ: *C. jejuni*

VP: *Vibrio parahaemolyticus*


**GTX00867 ELISA Image**

ELISA analysis of crude extract of *Campylobacter jejuni* using GTX00867 Campylobacter Porin antibody [cj-01].

Protein coating amount : 100µl (1 µg/ml) per well

Antibody amount : 100µl at indicated dilution

	ELISA	WB
<i>Campylobacter jejuni</i> (JCM2529)	+	43K
Other 3 isolated strains	+	
<i>Campylobacter coli</i> (JCM2013)	+	44K
<i>Salmonella Enteritidis</i>	—	—
<i>Vibrio parahaemolyticus</i>	—	—
<i>Escherichia coli</i> (ETEC)	—	—
EHEC (O157:H7)	—	—
<i>Staphylococcus aureus</i>	—	—
<i>Clostridium perfringens</i>	—	—
<i>Bacillus cereus</i>	—	—

**GTX00867 Image**

Specific reactivity of GTX00867 Campylobacter Porin antibody [cj-01] with various food poisoning bacteria by ELISA and WB.



For full product information, images and publications, please visit our [website](http://www.genetex.com).