

Influenza B virus M1 (matrix protein) antibody [6A11]

Cat. No. GTX00869

Host	Mouse
Clonality	Monoclonal
Isotype	IgG1
Applications	WB, ICC/IF, IP, ELISA
Reactivity	Influenza B virus

Package
100 µg

Applications

Application Note

*Optimal dilutions/concentrations should be determined by the researcher.

Suggested dilution	Recommended dilution
WB	1:500-1:1000
ICC/IF	1:100-1:200
IP	1:200
ELISA	Assay dependent

Not tested in other applications.

Product Note

It reacts with M1 proteins of all Influenza B viruses so far tested (100 strains) as examined by ICC staining, including lineage Yamagata strains; Mie/1/1993, JohanesBurg/5/1999, Florida/4/2006 and lineage Victoria strains; Lee/1940, Gif/21/1973, Shangdong/7/1997, Malasia/2506/2004, Massachusetts/2/2012.
We do not recommend use of this product for Influenza A virus samples.

Properties

Form	Liquid
Buffer	Filter-sterilized PBS, 50% Glycerol
Preservative	No preservatives
Storage	Store as concentrated solution. Centrifuge briefly prior to opening vial. For short-term storage (1-2 weeks), store at 4°C. For long-term storage, aliquot and store at -20°C or below. Avoid multiple freeze-thaw cycles.
Concentration	1 mg/ml (Please refer to the vial label for the specific concentration.)
Immunogen	Human Influenza B Virus strain Nagasaki/1/87, one of the strains of B/Victoria group
Purification	Purified IgG From culture supernatant
Conjugation	Unconjugated



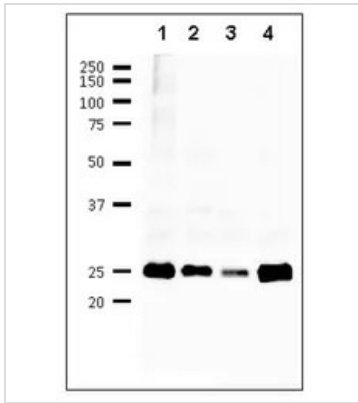
For full product information, images and publications, please visit our [website](#).

Date 2026 / 01 / 08 Page 1 of 2

For laboratory research use only. Not for any clinical, therapeutic, or diagnostic use in humans or animals. Not for animal or human consumption.

Note

Purchasers shall not, and agree not to enable third parties to, analyze, copy, reverse engineer or otherwise attempt to determine the structure or sequence of the product.

DATA IMAGES

GTX00869 WB Image

WB analysis of MDCK cells infected with various Influenza B virus strains using GTX00869 Influenza B Virus M1 antibody [6A11].

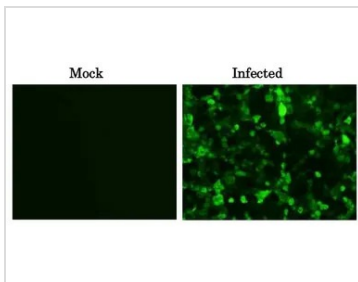
Lane 1 : B/Florida/4/2006

Lane 2 : B/Lee/1940

Lane 3 : B/Malasia/2506/2004

Lane 4 : B/Massachusetts/2/2012

Dilution : 1:500


GTX00869 ICC/IF Image

ICC/IF analysis of MDCK cells infected with Influenza B virus (B/Florida/4/2006 virus) using GTX00869 Influenza B Virus M1 antibody [6A11]. This antibody efficiently detected the viruses in the infected MDCK cells with B/Florida/4/2006 virus.

Fixation : 4% PFA in PBS

Permeabilization : 0.1% Triton X-100 in PBS

Dilution : 1:100



For full product information, images and publications, please visit our [website](https://www.genetex.com).