

POLH antibody [5H10]

Cat. No. GTX00871

Host	Mouse
Clonality	Monoclonal
Isotype	IgG1
Applications	WB, ICC/IF
Reactivity	Human

Package
100 µg

Applications

Application Note

*Optimal dilutions/concentrations should be determined by the researcher.

Suggested dilution	Recommended dilution
WB	1:500-1:2000
ICC/IF	1:200-1:1000

Not tested in other applications.

Calculated MW 78 kDa. ([Note](#))

Properties

Form	Liquid
Buffer	Filter-sterilized PBS, 50% Glycerol
Preservative	No preservative
Storage	Store as concentrated solution. Centrifuge briefly prior to opening vial. For short-term storage (1-2 weeks), store at 4°C. For long-term storage, aliquot and store at -20°C or below. Avoid multiple freeze-thaw cycles.
Concentration	1 mg/ml (Please refer to the vial label for the specific concentration.)
Immunogen	Human recombinant full-size Pol eta tagged with His6
Purification	Purified by salting-out and ion-exchange chromatography From culture supernant
Purity	90-95% by SDS-PAGE
Conjugation	Unconjugated

Note

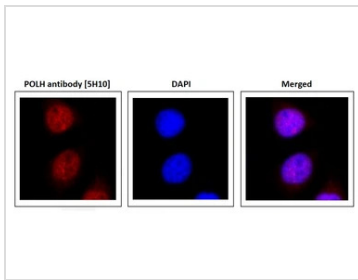
For laboratory research use only. Not for any clinical, therapeutic, or diagnostic use in humans or animals. Not for animal or human consumption.

Purchasers shall not, and agree not to enable third parties to, analyze, copy, reverse engineer or otherwise attempt to determine the structure or sequence of the product.



For full product information, images and publications, please visit our [website](#).

DATA IMAGES



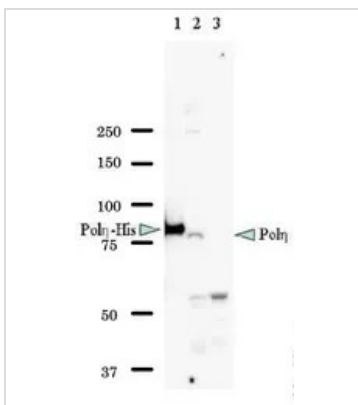
GTX00871 ICC/IF Image

ICC/IF analysis of HeLa cells using GTX00871 POLH antibody [5H10].

Fixation : 4% PFA, overnight

Permeabilization : 0.25% Triton X-100 in PBS, 10 min

Dilution : 1:1000



GTX00871 WB Image

WB analysis of various samples using GTX00871 POLH antibody [5H10].

Lane 1 : Recombinant full-size Pol eta (POLH) with 6XHis tag at C-terminus

Lane 2 : HeLa whole cell lysate (~40 µg)

Lane 3 : XP2SA (XP-V) whole cell lysate (~40 µg)



For full product information, images and publications, please visit our [website](https://www.genetex.com).