

SNRPC antibody [4H12]

Cat. No. GTX00872

Host	Rat
Clonality	Monoclonal
Isotype	IgG2a
Application	WB, ICC/IF, IHC-Fr, IP, ELISA
Reactivity	Human, Mouse, Simian

Package
100 µg

APPLICATION

Application Note

*Optimal dilutions/concentrations should be determined by the researcher.

Suggested dilution	Recommended dilution
WB	Assay dependent
ICC/IF	Assay dependent
IHC-Fr	Assay dependent
IP	Assay dependent
ELISA	Assay dependent

Not tested in other applications.

Calculated MW 17 kDa. ([Note](#))

PROPERTIES

Form	Liquid
Buffer	Filter-sterilized PBS, 50% Glycerol
Preservative	No preservative
Storage	Store as concentrated solution. Centrifuge briefly prior to opening vial. For short-term storage (1-2 weeks), store at 4°C. For long-term storage, aliquot and store at -20°C or below. Avoid multiple freeze-thaw cycles.
Concentration	1 mg/ml (Please refer to the vial label for the specific concentration.)
Immunogen	Recombinant GST-fused mouse U1C (full length)
Purification	Purified IgG
Conjugation	Unconjugated

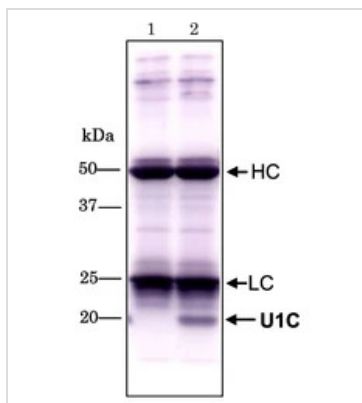
For full product information, images and publications, please visit our [website](#).

For laboratory research use only. Not for any clinical, therapeutic, or diagnostic use in humans or animals. Not for animal or human consumption.

Note

Purchasers shall not, and agree not to enable third parties to, analyze, copy, reverse engineer or otherwise attempt to determine the structure or sequence of the product.

DATA IMAGES



GTx00872 IP Image

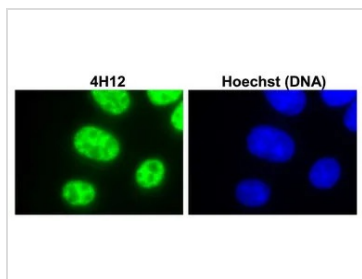
IP analysis of HeLa whole cell lysate using GTx00872 SNRPC antibody [4H12].

Lane 1 : No extract

Lane 2 : HeLa total extract

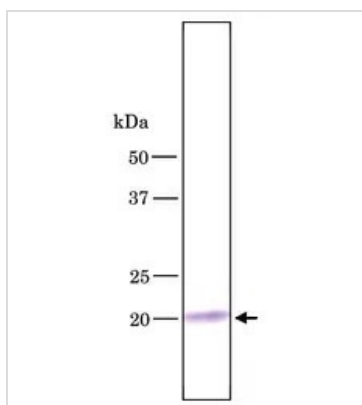
HC: Heavy chain of IgG

LC: Light chain of IgG



GTx00872 ICC/IF Image

ICC/IF analysis of L929 cells using GTx00872 SNRPC antibody [4H12].



GTx00872 WB Image

WB analysis of HeLa whole cell lysate using GTx00872 SNRPC antibody [4H12].



For full product information, images and publications, please visit our [website](https://www.genetex.com).