

GLUT3 antibody [#10]

Cat. No. GTX00876

Host	Rat
Clonality	Monoclonal
Isotype	IgG2a
Applications	WB
Reactivity	Mouse

Package
100 µg

Applications

Application Note

*Optimal dilutions/concentrations should be determined by the researcher.

Suggested dilution	Recommended dilution
WB	1:200-1:500

Not tested in other applications.

Calculated MW 53 kDa. ([Note](#))

Properties

Form	Liquid
Buffer	Filter-sterilized PBS, 50% Glycerol
Preservative	No preservatives
Storage	Store as concentrated solution. Centrifuge briefly prior to opening vial. For short-term storage (1-2 weeks), store at 4°C. For long-term storage, aliquot and store at -20°C or below. Avoid multiple freeze-thaw cycles.
Concentration	1 mg/ml (Please refer to the vial label for the specific concentration.)
Immunogen	Mouse sperm
Purification	Purified IgG
Conjugation	Unconjugated

Note

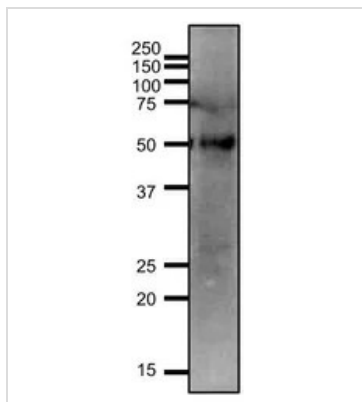
For laboratory research use only. Not for any clinical, therapeutic, or diagnostic use in humans or animals. Not for animal or human consumption.

Purchasers shall not, and agree not to enable third parties to, analyze, copy, reverse engineer or otherwise attempt to determine the structure or sequence of the product.



For full product information, images and publications, please visit our [website](#).

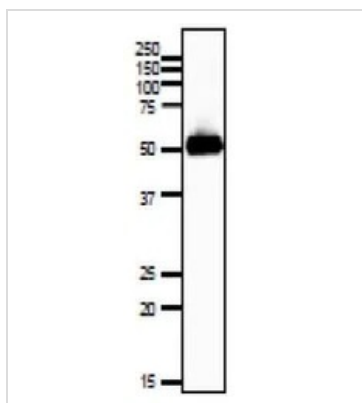
DATA IMAGES



GTx00876 WB Image

WB analysis of mouse testis using GTx00876 GLUT3 antibody [#10].

Dilution : 1:500



GTx00876 WB Image

WB analysis of mouse sperm using GTx00876 GLUT3 antibody [#10].

Dilution : 1:500



For full product information, images and publications, please visit our [website](https://www.genetex.com).