

## Clostridium perfringens enterotoxin (CPE) antibody

Cat. No. GTX00879

Host	Rabbit
Clonality	Polyclonal
Isotype	IgG
Application	WB, IP, Dot, ELISA
Reactivity	Clostridium perfringens

Reference ( 1 )

Package

200 µg

## APPLICATION

## Application Note

\*Optimal dilutions/concentrations should be determined by the researcher.

Suggested dilution	Recommended dilution
WB	1:1000-1:2000
IP	1:200-1:500
Dot	1:20,000- 1:100,000
ELISA	1:1000

Not tested in other applications.

**Calculated MW** 35 kDa. ( [Note](#) )

**Product Note** This antibody is useful for detecting food-poisoning strains of Clostridium perfringens enterotoxin.

## PROPERTIES

Form	Liquid
Buffer	Filter-sterilized PBS, 50% Glycerol
Preservative	No preservative
Storage	Store as concentrated solution. Centrifuge briefly prior to opening vial. For short-term storage (1-2 weeks), store at 4°C. For long-term storage, aliquot and store at -20°C or below. Avoid multiple freeze-thaw cycles.
Concentration	4 mg/ml (Please refer to the vial label for the specific concentration.)
Immunogen	Highly purified enterotoxin from Clostridium perfringens, strain NCTC8239
Purification	Purified IgG
Conjugation	Unconjugated



For full product information, images and publications, please visit our [website](#).

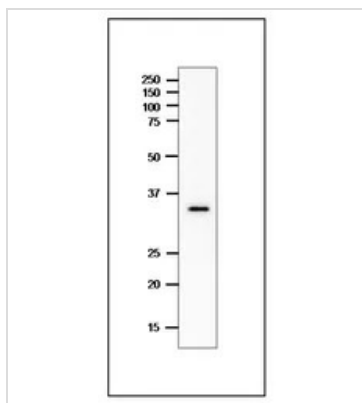
Date 2024 / 05 / 19 Page 1 of 2

For laboratory research use only. Not for any clinical, therapeutic, or diagnostic use in humans or animals. Not for animal or human consumption.

## Note

Purchasers shall not, and agree not to enable third parties to, analyze, copy, reverse engineer or otherwise attempt to determine the structure or sequence of the product.

## DATA IMAGES

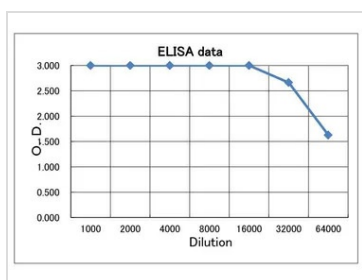


### GTX00879 WB Image

WB analysis of crude extract of *C. perfringens* using GTX00879 *Clostridium perfringens* enterotoxin (CPE) antibody.

Dilution : 1 µg/ml

SDS-PAGE : 12.5%

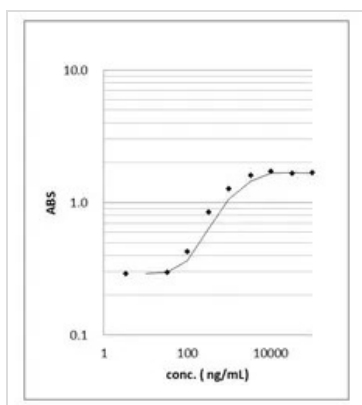


### GTX00879 ELISA Image

ELISA analysis of purified *C. perfringens* enterotoxin using GTX00879 *Clostridium perfringens* enterotoxin (CPE) antibody.

Protein coating amount : 100µl (0.2 µg) per well

Antibody amount : 100µl at indicated dilution



### GTX00879 ELISA Image

ELISA analysis of purified *C. perfringens* enterotoxin using GTX00879 *Clostridium perfringens* enterotoxin (CPE) antibody.

Protein coating amount : 100µl per well at indicated amount

Antibody amount : 100µl (1:1000) per well



For full product information, images and publications, please visit our [website](https://www.genetex.com).