

gamma Tubulin antibody

Cat. No. GTX00881

Host	Rabbit
Clonality	Polyclonal
Isotype	IgG
Applications	WB, ICC/IF
Reactivity	Human, Xenopus, Rodent

Package
100 µg

Applications

Application Note

*Optimal dilutions/concentrations should be determined by the researcher.

Suggested dilution	Recommended dilution
WB	1:200-1:1000
ICC/IF	1:100-1:200

Not tested in other applications.

Properties

Form	Liquid
Buffer	Filter-sterilized PBS, 50% Glycerol
Preservative	No preservatives
Storage	Store as concentrated solution. Centrifuge briefly prior to opening vial. For short-term storage (1-2 weeks), store at 4°C. For long-term storage, aliquot and store at -20°C or below. Avoid multiple freeze-thaw cycles.
Concentration	1 mg/ml (Please refer to the vial label for the specific concentration.)
Immunogen	Xenopus gamma-tubulin C-terminal peptide, C-EYHAATRPDYISWGTQDK conjugated with KLH
Purification	Purified by antigen-affinity chromatography
Conjugation	Unconjugated

Note

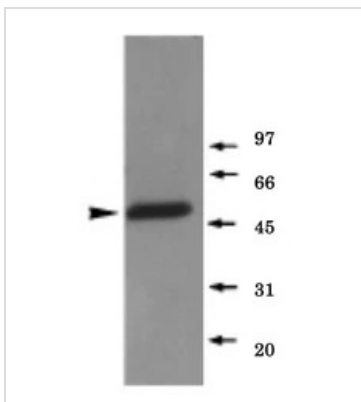
For laboratory research use only. Not for any clinical, therapeutic, or diagnostic use in humans or animals. Not for animal or human consumption.

Purchasers shall not, and agree not to enable third parties to, analyze, copy, reverse engineer or otherwise attempt to determine the structure or sequence of the product.



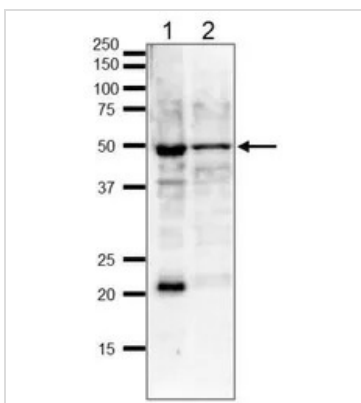
For full product information, images and publications, please visit our [website](#).

DATA IMAGES



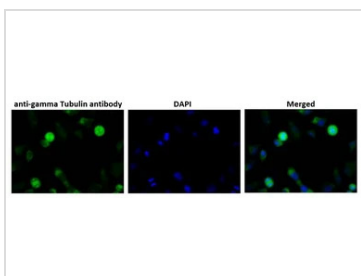
GTX00881 WB Image

WB analysis of Xenopus mitotic extract using GTX00881 gamma Tubulin antibody.
Dilution : 1:1000



GTX00881 WB Image

WB analysis of various samples using GTX00881 gamma Tubulin antibody.
Lane 1 : HeLa whole cell lysate
Lane 2 : MCF-7 whole cell lysate
Loading : 20 µg
Dilution : 1:1000



GTX00881 ICC/IF Image

ICC/IF analysis of HeLa cells using GTX00881 gamma Tubulin antibody.
Dilution : 1:100



GTX00881 ICC/IF Image

ICC/IF analysis of Xenopus sperm heads using GTX00881 gamma Tubulin antibody. The Xenopus sperm heads have been incubated in a Xenopus egg mitotic extract containing nocodazole. Gamma tubulin proteins are accumulated at sperm centriole in Xenopus sperm heads.
Red : Primary antibody
Blue : DAPI
Dilution : 1:100



For full product information, images and publications, please visit our [website](http://www.genetex.com).