

CDC2 antibody

Cat. No. GTX00882

Host	Rabbit
Clonality	Polyclonal
Isotype	IgG
Applications	WB, IP
Reactivity	Human, Xenopus

Package
100 µg

Applications

Application Note

*Optimal dilutions/concentrations should be determined by the researcher.

Suggested dilution	Recommended dilution
WB	1:200-1:500
IP	1:100

Not tested in other applications.

Calculated MW 35 kDa. ([Note](#))

Properties

Form	Liquid
Buffer	PBS, 50% Glycerol
Preservative	No preservatives
Storage	Store as concentrated solution. Centrifuge briefly prior to opening vial. For short-term storage (1-2 weeks), store at 4°C. For long-term storage, aliquot and store at -20°C or below. Avoid multiple freeze-thaw cycles.
Concentration	2 mg/ml (Please refer to the vial label for the specific concentration.)
Immunogen	Synthetic peptide corresponding to C-terminal region of Xenopus Cdk1 protein (C-KSSLPDNQIRN) conjugated with KLH
Purification	Purified IgG
Conjugation	Unconjugated

Note

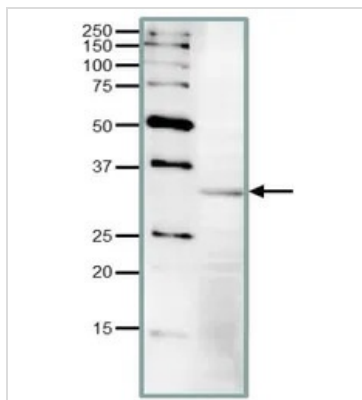
For laboratory research use only. Not for any clinical, therapeutic, or diagnostic use in humans or animals. Not for animal or human consumption.

Purchasers shall not, and agree not to enable third parties to, analyze, copy, reverse engineer or otherwise attempt to determine the structure or sequence of the product.



For full product information, images and publications, please visit our [website](#).

DATA IMAGES



GTx00882 WB Image

WB analysis of *Xenopus laevis* eggs using GTx00882 CDC2 antibody.

Dilution : 1:200

Loading : 30 µg



For full product information, images and publications, please visit our [website](#).