

# Rad52 antibody

**Cat. No. GTX00884**

<b>Host</b>	Rabbit
<b>Clonality</b>	Polyclonal
<b>Isotype</b>	IgG
<b>Application</b>	WB, ICC/IF, IP, ELISA
<b>Reactivity</b>	Human, Mouse, Rat, Hamster

**Package**  
50 µg

## APPLICATION

### Application Note

\*Optimal dilutions/concentrations should be determined by the researcher.

Suggested dilution	Recommended dilution
WB	1:1000-1:3000
ICC/IF	1:1000
IP	1:50-1:1000
ELISA	Assay dependent

Not tested in other applications.

**Calculated MW** 46 kDa. ( [Note](#) )

## PROPERTIES

<b>Form</b>	Liquid
<b>Buffer</b>	PBS, 20mM Sodium Phosphate, 150mM NaCl, 50% Glycerol
<b>Preservative</b>	No preservative
<b>Storage</b>	Store as concentrated solution. Centrifuge briefly prior to opening vial. For short-term storage (1-2 weeks), store at 4°C. For long-term storage, aliquot and store at -20°C or below. Avoid multiple freeze-thaw cycles.
<b>Concentration</b>	1 mg/ml (Please refer to the vial label for the specific concentration.)
<b>Immunogen</b>	Full-size recombinant human Rad52 protein, no tag-peptide attached
<b>Purification</b>	Purified by antigen-affinity chromatography
<b>Conjugation</b>	Unconjugated

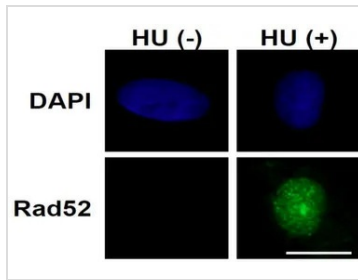
### Note

For laboratory research use only. Not for any clinical, therapeutic, or diagnostic use in humans or animals. Not for animal or human consumption.

Purchasers shall not, and agree not to enable third parties to, analyze, copy, reverse engineer or otherwise attempt to determine the structure or sequence of the product.



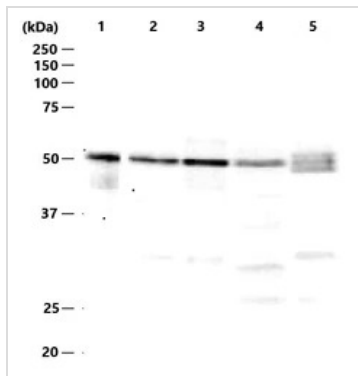
For full product information, images and publications, please visit our [website](#).

**DATA IMAGES**

**GTx00884 ICC/IF Image**

ICC/IF analysis of U2OS 40-2-6 cells treated with or without 2 mM hydroxyurea (HU) for 24 hrs using GTx00884 Rad52 antibody. The cells were pre-extracted with 0.1% Triton X-100 in PBS, fixed with 4% PFA in PBS. Triton X-100 treatment extracts chromatin-free Rad52 from nuclei.

Scale bars : 20  $\mu$ m

Dilution : 1:50


**GTx00884 WB Image**

WB analysis of various samples using GTx00884 Rad52 antibody.

Lane 1 : Recombinant human Rad52 protein (0.2 ng)

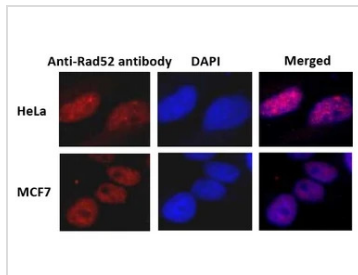
Lane 2 : HeLa whole cell lysate (17  $\mu$ g)

Lane 3 : MCF-7 whole cell lysate (27  $\mu$ g)

Lane 4 : NIH-3T3 whole cell lysate (20  $\mu$ g)

Lane 5 : CHO whole cell lysate (21  $\mu$ g)

Dilution : 1:1000

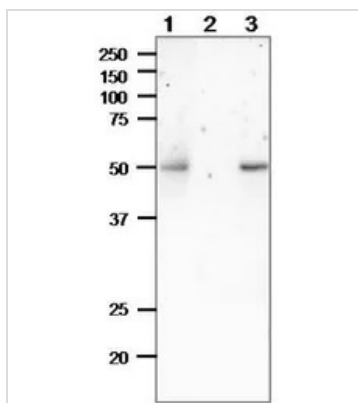

**GTx00884 ICC/IF Image**

ICC/IF analysis of HeLa (Upper) and MCF-7 (Lower) cells using GTx00884 Rad52 antibody.

Fixation : 4% PFA

Permeabilization : 0.25% Triton X-100

Dilution : 1:1000


**GTx00884 IP Image**

IP analysis of MCF-7 whole cell lysate using GTx00884 Rad52 antibody.

Lane 1: The eluate

Lane 2: The supernatant

Lane 3: Input (16  $\mu$ g)

IP antibody : 10  $\mu$ g

Protein amount: 300  $\mu$ g in PBS



For full product information, images and publications, please visit our [website](https://www.genetex.com).