

Rad52 antibody

Cat. No. GTX00884

Host	Rabbit
Clonality	Polyclonal
Isotype	IgG
Applications	WB, ICC/IF, IP, ELISA
Reactivity	Human, Mouse, Rat, Hamster

Package
50 µg

Applications

Application Note

*Optimal dilutions/concentrations should be determined by the researcher.

Suggested dilution	Recommended dilution
WB	1:1000-1:3000
ICC/IF	1:1000
IP	1:50-1:1000
ELISA	Assay dependent

Not tested in other applications.

Calculated MW 46 kDa. ([Note](#))

Properties

Form	Liquid
Buffer	PBS, 20mM Sodium Phosphate, 150mM NaCl, 50% Glycerol
Preservative	No preservatives
Storage	Store as concentrated solution. Centrifuge briefly prior to opening vial. For short-term storage (1-2 weeks), store at 4°C. For long-term storage, aliquot and store at -20°C or below. Avoid multiple freeze-thaw cycles.
Concentration	1 mg/ml (Please refer to the vial label for the specific concentration.)
Immunogen	Full-size recombinant human Rad52 protein, no tag-peptide attached
Purification	Purified by antigen-affinity chromatography
Conjugation	Unconjugated

Note

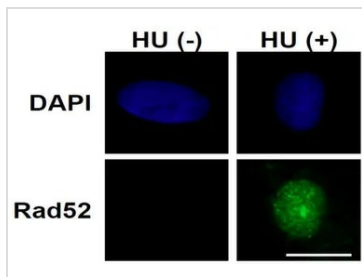
For laboratory research use only. Not for any clinical, therapeutic, or diagnostic use in humans or animals. Not for animal or human consumption.

Purchasers shall not, and agree not to enable third parties to, analyze, copy, reverse engineer or otherwise attempt to determine the structure or sequence of the product.



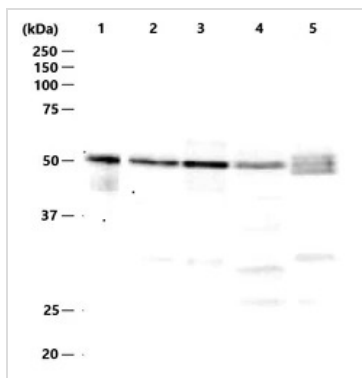
For full product information, images and publications, please visit our [website](#).

DATA IMAGES



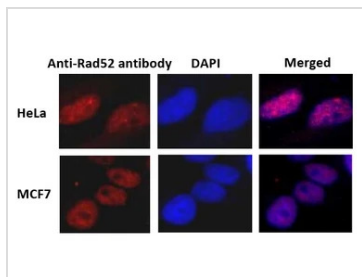
GTX00884 ICC/IF Image

ICC/IF analysis of U2OS 40-2-6 cells treated with or without 2 mM hydroxyurea (HU) for 24 hrs using GTX00884 Rad52 antibody. The cells were pre-extracted with 0.1% Triton X-100 in PBS, fixed with 4% PFA in PBS. Triton X-100 treatment extracts chromatin-free Rad52 from nuclei.
 Scale bars : 20 μ m
 Dilution : 1:50



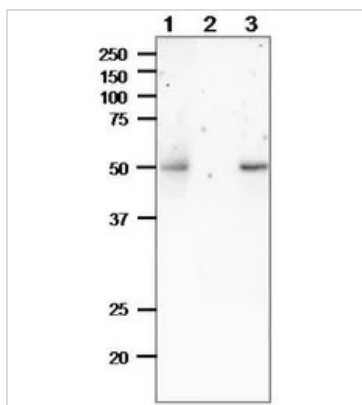
GTX00884 WB Image

WB analysis of various samples using GTX00884 Rad52 antibody.
 Lane 1 : Recombinant human Rad52 protein (0.2 ng)
 Lane 2 : HeLa whole cell lysate (17 μ g)
 Lane 3 : MCF-7 whole cell lysate (27 μ g)
 Lane 4 : NIH-3T3 whole cell lysate (20 μ g)
 Lane 5 : CHO whole cell lysate (21 μ g)
 Dilution : 1:1000



GTX00884 ICC/IF Image

ICC/IF analysis of HeLa (Upper) and MCF-7 (Lower) cells using GTX00884 Rad52 antibody.
 Fixation : 4% PFA
 Permeabilization : 0.25% Triton X-100
 Dilution : 1:1000



GTX00884 IP Image

IP analysis of MCF-7 whole cell lysate using GTX00884 Rad52 antibody.
 Lane 1: The eluate
 Lane 2: The supernatant
 Lane 3: Input (16 μ g)
 IP antibody : 10 μ g
 Protien amount: 300 μ g in PBS



For full product information, images and publications, please visit our [website](#).