

RAD18 antibody

Cat. No. GTX00886

Host	Rabbit
Clonality	Polyclonal
Isotype	IgG
Applications	WB, ICC/IF, IP
Reactivity	Human

Package
100 µg

Applications

Application Note

*Optimal dilutions/concentrations should be determined by the researcher.

Suggested dilution	Recommended dilution
WB	1:1000
ICC/IF	Assay dependent
IP	Assay dependent

Not tested in other applications.

Calculated MW 56 kDa. ([Note](#))

Properties

Form	Liquid
Buffer	PBS, 50% Glycerol
Preservative	No preservatives
Storage	Store as concentrated solution. Centrifuge briefly prior to opening vial. For short-term storage (1-2 weeks), store at 4°C. For long-term storage, aliquot and store at -20°C or below. Avoid multiple freeze-thaw cycles.
Concentration	1 mg/ml (Please refer to the vial label for the specific concentration.)
Immunogen	GST-fusion protein containing 113 carboxyl terminal of human Rad18
Purification	Purified by antigen-affinity chromatography
Conjugation	Unconjugated

Note

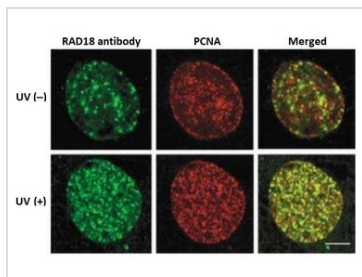
For laboratory research use only. Not for any clinical, therapeutic, or diagnostic use in humans or animals. Not for animal or human consumption.

Purchasers shall not, and agree not to enable third parties to, analyze, copy, reverse engineer or otherwise attempt to determine the structure or sequence of the product.



For full product information, images and publications, please visit our [website](#).

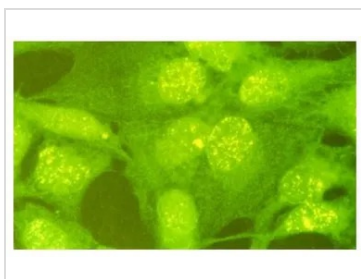
DATA IMAGES

**GTX00886 ICC/IF Image**

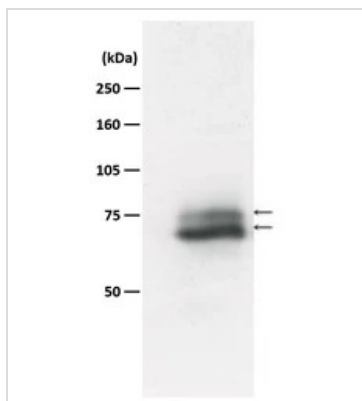
ICC/IF analysis of GM637 cells were irradiated with/without UV (15/m²) for 4 hrs using GTX00886 RAD18 antibody.

Fixation : Methanol

Dilution : 1:250

**GTX00886 ICC/IF Image**

ICC/IF analysis of GM637 cells using GTX00886 RAD18 antibody. Rad18 protein is stained as yellow dots in nuclei.

**GTX00886 WB Image**

WB analysis of A549 whole cell lysate using GTX00886 RAD18 antibody. The lower thick band is native Rad18 and the upper thin band is mono-ubiquitinated Rad18.

Dilution : 1:1000



For full product information, images and publications, please visit our [website](#).