

# RRM2 antibody

**Cat. No. GTX00888**

<b>Host</b>	Rabbit
<b>Clonality</b>	Polyclonal
<b>Isotype</b>	IgG
<b>Applications</b>	WB, ICC/IF, IHC-P, IP
<b>Reactivity</b>	Human, Mouse, Rat, Hamster, Xenopus

**Package**  
100 µg

## Applications

### Application Note

\*Optimal dilutions/concentrations should be determined by the researcher.

Suggested dilution	Recommended dilution
WB	1:1000-1:2000
ICC/IF	1:100-1:1000
IHC-P	Assay dependent
IP	1:300-1:1000

Not tested in other applications.

**Calculated MW** 45 kDa. ( [Note](#) )

## Properties

<b>Form</b>	Liquid
<b>Buffer</b>	Filter-sterilized PBS, 50% Glycerol
<b>Preservative</b>	No preservatives
<b>Storage</b>	Store as concentrated solution. Centrifuge briefly prior to opening vial. For short-term storage (1-2 weeks), store at 4°C. For long-term storage, aliquot and store at -20°C or below. Avoid multiple freeze-thaw cycles.
<b>Concentration</b>	1 mg/ml (Please refer to the vial label for the specific concentration.)
<b>Immunogen</b>	Synthetic peptide (11 amino acids) in the C-terminal region of human and mouse RRM2, conjugated with KLH
<b>Purification</b>	Purified by antigen-affinity chromatography
<b>Conjugation</b>	Unconjugated

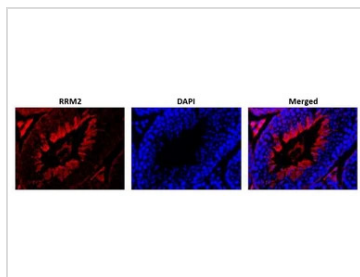
### Note

For laboratory research use only. Not for any clinical, therapeutic, or diagnostic use in humans or animals. Not for animal or human consumption.

Purchasers shall not, and agree not to enable third parties to, analyze, copy, reverse engineer or otherwise attempt to determine the structure or sequence of the product.

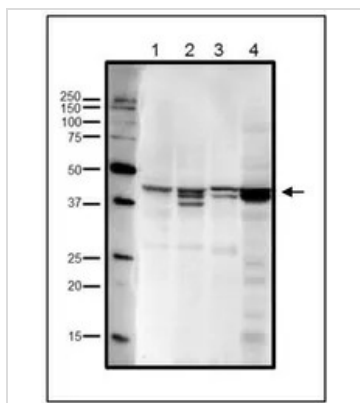


For full product information, images and publications, please visit our [website](#).

**DATA IMAGES**

**GTx00888 IHC-P Image**

IHC-P analysis of mouse testis tissue section using GTx00888 RRM2 antibody. RRM2 is abundantly expressed in actively proliferating cells.

Dilution : 1:300


**GTx00888 WB Image**

WB analysis of various samples using GTx00888 RRM2 antibody. Multiple bands are due to phosphorylation at Ser20 and/or Thr33 (human sequence).

Lane 1 : HeLa whole cell lysate

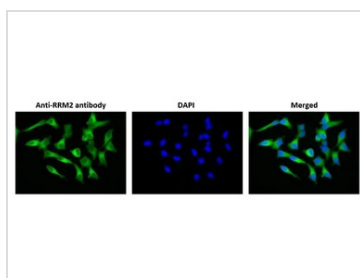
Lane 2 : MCF-7 whole cell lysate

Lane 3 : NIH-3T3 whole cell lysate

Lane 4 : Xenopus eggs at mitotic stage

Dilution : 1:1000

Loading : 20 µg

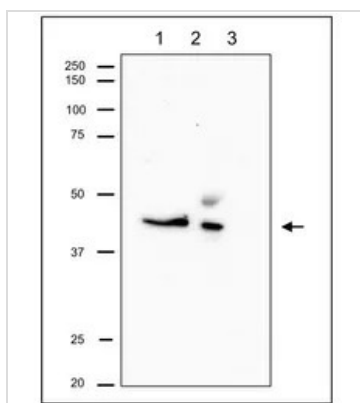

**GTx00888 ICC/IF Image**

ICC/IF analysis of MCF-7 cells using GTx00888 RRM2 antibody.

Fixation : 4% PFA

Permeabilization : 0.25% Triton X-100

Dilution : 1:100


**GTx00888 IP Image**

IP analysis of CHO whole cell lysate using GTx00888 RRM2 antibody. The upper band in lane 2 is IgG heavy chain.

Lane 1 : Input

Lane 2 : The immunoprecipitate with the antibody

Lane 3 : Supernatant of immuno-precipitation

IP antibody : 1:1000

IB antibody : 1:500



For full product information, images and publications, please visit our [website](https://www.genetex.com).