

# DSN1 antibody

**Cat. No. GTX00889**

<b>Host</b>	Rabbit
<b>Clonality</b>	Polyclonal
<b>Isotype</b>	IgG
<b>Applications</b>	WB, ICC/IF
<b>Reactivity</b>	Human, Mouse, Rat

**Package**  
100 µl

## Applications

### Application Note

\*Optimal dilutions/concentrations should be determined by the researcher.

Suggested dilution	Recommended dilution
WB	1:1000
ICC/IF	1:1000

Not tested in other applications.

**Calculated MW** 40 kDa. ( [Note](#) )

## Properties

<b>Form</b>	Liquid
<b>Buffer</b>	Serum
<b>Preservative</b>	0.05% Sodium azide
<b>Storage</b>	Store as concentrated solution. Centrifuge briefly prior to opening vial. For short-term storage (1-2 weeks), store at 4°C. For long-term storage, aliquot and store at -20°C or below. Avoid multiple freeze-thaw cycles.
<b>Concentration</b>	Batch dependent (Please refer to the vial label for the specific concentration.)
<b>Immunogen</b>	Recombinant GST-DSN1 (1-356 aa)
<b>Purification</b>	Purified IgG From serum
<b>Conjugation</b>	Unconjugated

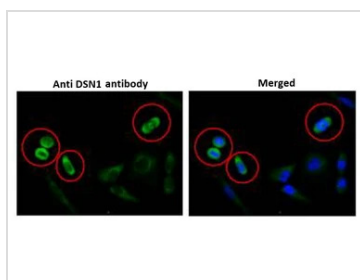
### Note

For laboratory research use only. Not for any clinical, therapeutic, or diagnostic use in humans or animals. Not for animal or human consumption.

Purchasers shall not, and agree not to enable third parties to, analyze, copy, reverse engineer or otherwise attempt to determine the structure or sequence of the product.



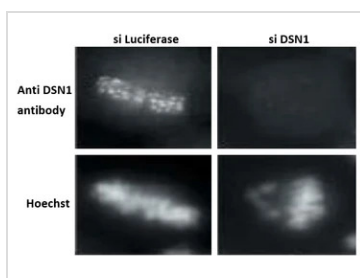
For full product information, images and publications, please visit our [website](#).

**DATA IMAGES**

**GTx00889 ICC/IF Image**

ICC/IF analysis of HeLa cells using GTx00889 DSN1 antibody. DSN1 is abundantly expressed in mitotic cells on mitotic apparatus.

Fixation : 4% PFA

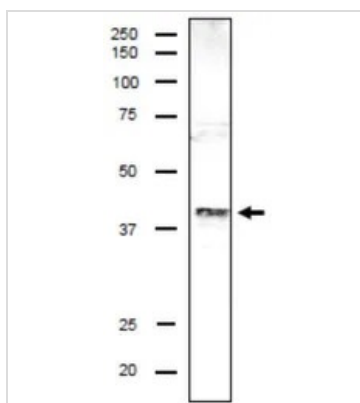
Dilution : 1:100


**GTx00889 ICC/IF Image**

ICC/IF analysis of HeLa cells using GTx00889 DSN1 antibody. Mitotic cells were accumulated by nocodazole treatment and chromosomes were spread on coverglass.

Left : Cells transfected with Luciferase siRNA (as a control)

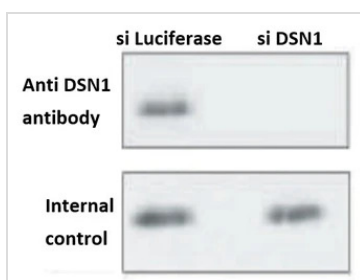
Right : Cells transfected with DSN1 siRNA


**GTx00889 WB Image**

WB analysis of MCF-7 whole cell lysate using GTx00889 DSN1 antibody.

Dilution : 1:1000

Loading : 20 µg


**GTx00889 WB Image**

WB analysis of HeLa whole cell lysate using GTx00889 DSN1 antibody.

Lane 1 : Cells transfected with Luciferase siRNA (as a control)

Lane 2 : Cells transfected with DSN1 siRNA

Dilution : 1:1000



For full product information, images and publications, please visit our [website](http://www.genetex.com).