

Rad21 antibody

Cat. No. GTX00890

Host	Rabbit
Clonality	Polyclonal
Isotype	IgG
Application	WB, ICC/IF
Reactivity	Human, Mouse, Hamster

Package

50 µg

APPLICATION

Application Note

*Optimal dilutions/concentrations should be determined by the researcher.

Suggested dilution	Recommended dilution
WB	1:2000
ICC/IF	1:100-1:500

Not tested in other applications.

Calculated MW 72 kDa. ([Note](#))

PROPERTIES

Form	Liquid
Buffer	Filter-sterilized PBS, 50% Glycerol
Preservative	No preservative
Storage	Store as concentrated solution. Centrifuge briefly prior to opening vial. For short-term storage (1-2 weeks), store at 4°C. For long-term storage, aliquot and store at -20°C or below. Avoid multiple freeze-thaw cycles.
Concentration	1 mg/ml (Please refer to the vial label for the specific concentration.)
Immunogen	Human Rad21 C-terminal peptide, C-ATPGPRFHII
Purification	Purified by antigen-affinity chromatography From serum
Conjugation	Unconjugated

Note

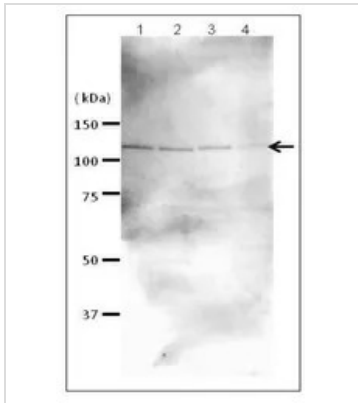
For laboratory research use only. Not for any clinical, therapeutic, or diagnostic use in humans or animals. Not for animal or human consumption.

Purchasers shall not, and agree not to enable third parties to, analyze, copy, reverse engineer or otherwise attempt to determine the structure or sequence of the product.



For full product information, images and publications, please visit our [website](#).

DATA IMAGES



GTX00890 WB Image

WB analysis of various samples using GTX00890 Rad21 antibody.

Lane 1 : HeLa whole cell lysate

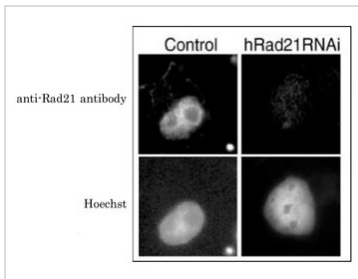
Lane 2 : MCF-7 whole cell lysate

Lane 3 : NIH-3T3 whole cell lysate

Lane 4 : CHO whole cell lysate

Dilution : 1:2000

Loading : 10-20 µg



GTX00890 ICC/IF Image

ICC/IF analysis of HeLa cells transfected with control or specific hRad21 siRNA using GTX00890 Rad21 antibody.

Fixation : 4% PFA

Permeabilization : 0.5% Triton X-100



For full product information, images and publications, please visit our [website](https://www.genetex.com).