

# Centrin 1 antibody

**Cat. No. GTX00891**

<b>Host</b>	Rabbit
<b>Clonality</b>	Polyclonal
<b>Isotype</b>	IgG
<b>Application</b>	WB, ICC/IF
<b>Reactivity</b>	Human, Mouse, Rat, Hamster, Xenopus

**Package**  
100 µg

## APPLICATION

### Application Note

\*Optimal dilutions/concentrations should be determined by the researcher.

Suggested dilution	Recommended dilution
WB	~1:1000
ICC/IF	1:100-1:1000

Not tested in other applications.

**Calculated MW** 20 kDa. ( [Note](#) )

## PROPERTIES

<b>Form</b>	Liquid
<b>Buffer</b>	Filter-sterilized PBS, 50% Glycerol
<b>Preservative</b>	No preservative
<b>Storage</b>	Store as concentrated solution. Centrifuge briefly prior to opening vial. For short-term storage (1-2 weeks), store at 4°C. For long-term storage, aliquot and store at -20°C or below. Avoid multiple freeze-thaw cycles.
<b>Concentration</b>	1 mg/ml (Please refer to the vial label for the specific concentration.)
<b>Immunogen</b>	Synthetic peptide conjugated to KLH, with a Cysteine residue linker corresponding to C terminal amino acids 155-168 (C-GEVNEEEFLRIMKK) of Human centrin-1
<b>Purification</b>	Purified by antigen-affinity chromatography
<b>Conjugation</b>	Unconjugated

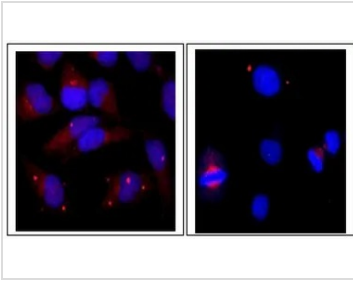
**Note**

For laboratory research use only. Not for any clinical, therapeutic, or diagnostic use in humans or animals. Not for animal or human consumption.

Purchasers shall not, and agree not to enable third parties to, analyze, copy, reverse engineer or otherwise attempt to determine the structure or sequence of the product.



For full product information, images and publications, please visit our [website](#).

**DATA IMAGES**

**GTx00891 ICC/IF Image**

ICC/IF analysis of HeLa cells using GTx00891 Centrin 1 antibody.

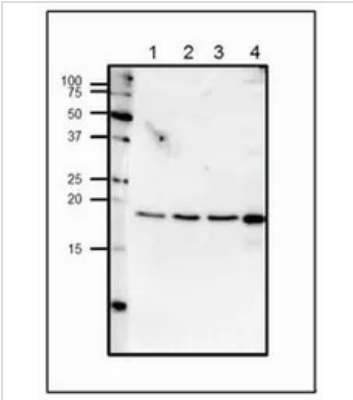
Fixation : 4% PFA

Permeabilization : 0.25% Triton X-100

Red : Primary antibody

Blue : DAPI

Dilution : 1:100


**GTx00891 WB Image**

WB analysis of various samples using GTx00891 Centrin 1 antibody.

Lane 1 : HeLa whole cell lysate (20 µg)

Lane 2 : MCF-7 whole cell lysate (20 µg)

Lane3 : NIH-3T3 whole cell lysate (20 µg)

Lane 4 : Xenopus eggs (50 µg)

Dilution : 1:1000



For full product information, images and publications, please visit our [website](https://www.genetex.com).