

# CDT2 antibody

**Cat. No. GTX00893**

<b>Host</b>	Rabbit
<b>Clonality</b>	Polyclonal
<b>Isotype</b>	IgG
<b>Application</b>	WB, ICC/IF, FACS, IP
<b>Reactivity</b>	Human, Mouse, Rat, Hamster

**Package**  
100 µl

## APPLICATION

### Application Note

\*Optimal dilutions/concentrations should be determined by the researcher.

Suggested dilution	Recommended dilution
WB	1:200-1:2000
ICC/IF	1:100-1:1000
FACS	Assay dependent
IP	Assay dependent

Not tested in other applications.

**Calculated MW** 79 kDa. ( [Note](#) )

## PROPERTIES

<b>Form</b>	Liquid
<b>Buffer</b>	Serum
<b>Preservative</b>	0.05% Sodium azide
<b>Storage</b>	Store as concentrated solution. Centrifuge briefly prior to opening vial. For short-term storage (1-2 weeks), store at 4°C. For long-term storage, aliquot and store at -20°C or below. Avoid multiple freeze-thaw cycles.
<b>Immunogen</b>	E. coli expressed and purified 6xHis-tagged C-terminal 150 amino acids of human Cdt2
<b>Purification</b>	Unpurified
<b>Conjugation</b>	Unconjugated

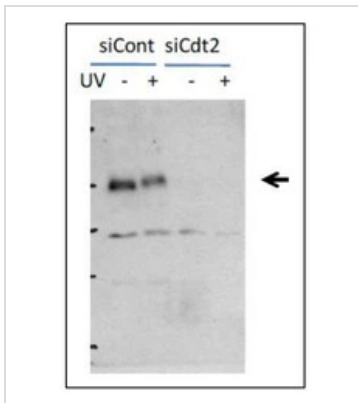
### Note

For laboratory research use only. Not for any clinical, therapeutic, or diagnostic use in humans or animals. Not for animal or human consumption.

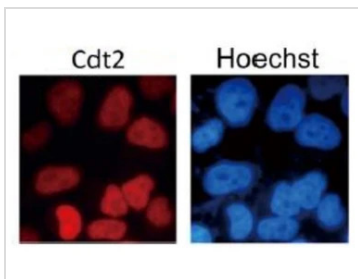
Purchasers shall not, and agree not to enable third parties to, analyze, copy, reverse engineer or otherwise attempt to determine the structure or sequence of the product.



For full product information, images and publications, please visit our [website](#).

**DATA IMAGES**

**GTx00893 WB Image**

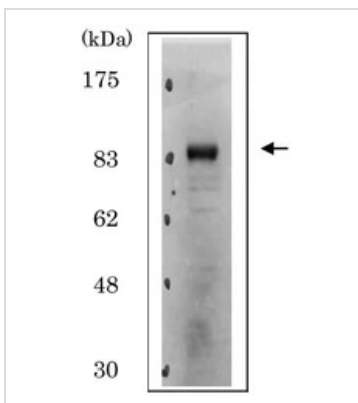
WB analysis of HeLa cells were transfected with control or Cdt2 siRNA using GTx00893 CDT2 antibody. Cdt2 is phosphorylated after UV irradiation as shown by the band shift-up in irradiated sample (UV +).


**GTx00893 ICC/IF Image**

ICC/IF analysis of HeLa cells using GTx00893 CDT2 antibody. Cdt2 protein is localized in nuclei at all cell stages.

Fixation : 4% PFA, 10 min

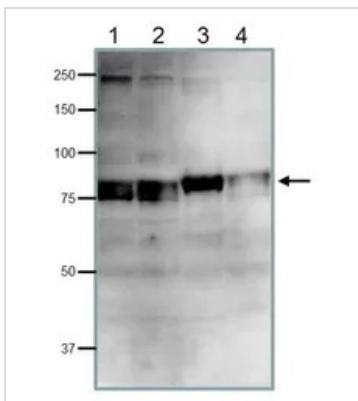
Permeabilization : 0.25% (v/v) Triton X-100 in PBS


**GTx00893 WB Image**

WB analysis of HeLa whole cell lysate using GTx00893 CDT2 antibody.

Dilution : 1:2000

Loading : 20 µg


**GTx00893 WB Image**

WB analysis of various samples using GTx00893 CDT2 antibody. Doublet bands reflect post-translational phosphorylation.

Lane 1 : HeLa whole cell lysate

Lane 2 : MCF-7 whole cell lysate

Lane 3 : NIH-3T3 whole cell lysate

Lane 4 : CHO whole cell lysate

Dilution : 1:200

Loading : 40 µg



For full product information, images and publications, please visit our [website](https://www.genetex.com).