

MCM7 antibody

Cat. No. GTX00894

Host	Rabbit
Clonality	Polyclonal
Isotype	IgG
Applications	WB, ICC/IF, FCM, IP, ChIP assay
Reactivity	Human, Mouse, Rat, Hamster

Package
100 µg

Applications

Application Note

*Optimal dilutions/concentrations should be determined by the researcher.

Suggested dilution	Recommended dilution
WB	1:1000-1:5000
ICC/IF	1:200-1:1000
FCM	Assay dependent
IP	Assay dependent
ChIP assay	Assay dependent

Not tested in other applications.

Calculated MW 81 kDa. ([Note](#))

Properties

Form	Liquid
Buffer	PBS, 50% Glycerol
Preservative	No preservatives
Storage	Store as concentrated solution. Centrifuge briefly prior to opening vial. For short-term storage (1-2 weeks), store at 4°C. For long-term storage, aliquot and store at -20°C or below. Avoid multiple freeze-thaw cycles.
Concentration	1 mg/ml (Please refer to the vial label for the specific concentration.)
Immunogen	Purified His6-tagged human MCM7 protein encompassing 562 -719 amino acids
Purification	Purified IgG From serum
Conjugation	Unconjugated

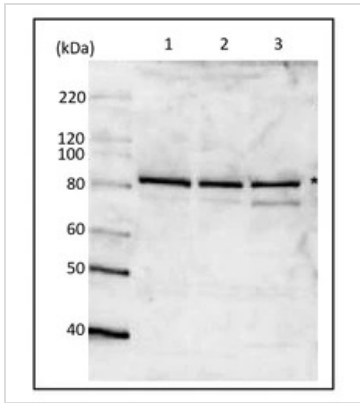


For full product information, images and publications, please visit our [website](#).

For laboratory research use only. Not for any clinical, therapeutic, or diagnostic use in humans or animals. Not for animal or human consumption.

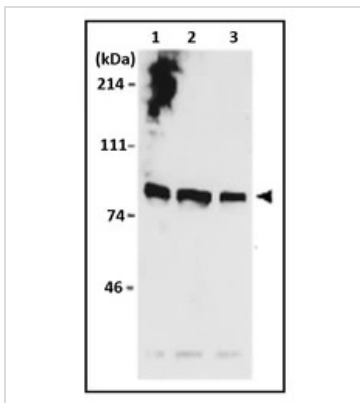
Note
 Purchasers shall not, and agree not to enable third parties to, analyze, copy, reverse engineer or otherwise attempt to determine the structure or sequence of the product.

DATA IMAGES



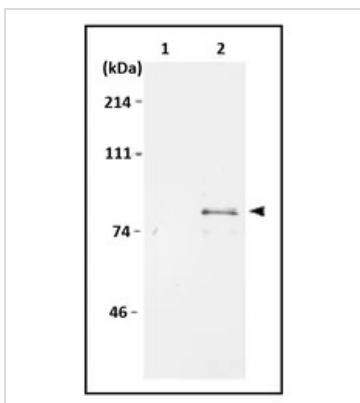
GTX00894 WB Image

WB analysis of various samples using GTX00894 MCM7 antibody. "*" : Indicates the band of MCM7 protein.
 Lane 1 : untreated HeLa cells
 Lane 2 : HeLa cells treated with 100 nM adriamycin for 24 hrs
 Lane 3 : NIH-3T3 whole cell lysate
 Dilution : 1:1000



GTX00894 WB Image

WB analysis of various samples using GTX00894 MCM7 antibody.
 Lane 1 : SiHa whole cell lysate
 Lane 2 : C33A whole cell lysate
 Lane 3 : WI38 whole cell lysate



GTX00894 IP Image

IP analysis of WI38 whole cell lysate using GTX00894 MCM7 antibody. Cells were labeled with S³⁵ methionine and MCM7 was immunoprecipitated with the anti-MCM7 antibody followed by SDS-PAGE and autoradiography.
 Lane 1 : Immunoprecipitation with pre-immune serum
 Lane 2 : Immunoprecipitation with anti-MCM7 antiserum



For full product information, images and publications, please visit our [website](http://www.genetex.com).