

## HP1 gamma antibody

**Cat. No. GTX00898**

<b>Host</b>	Rabbit
<b>Clonality</b>	Polyclonal
<b>Isotype</b>	IgG
<b>Applications</b>	WB, ICC/IF, ChIP assay
<b>Reactivity</b>	Human, Hamster

**Package**  
50 µg

## Applications

**Application Note**

\*Optimal dilutions/concentrations should be determined by the researcher.

Suggested dilution	Recommended dilution
WB	1:2000-1:10000
ICC/IF	Assay dependent
ChIP assay	Assay dependent

Not tested in other applications.

**Calculated MW** 21 kDa. ([Note](#))

**Product Note** chicken, Xenopus, Drosophila, and zebrafish

## Properties

<b>Form</b>	Liquid
<b>Buffer</b>	Filter-sterilized 0.12M Sodium Phosphate, 50% Glycerol
<b>Preservative</b>	No preservatives
<b>Storage</b>	Store as concentrated solution. Centrifuge briefly prior to opening vial. For short-term storage (1-2 weeks), store at 4°C. For long-term storage, aliquot and store at -20°C or below. Avoid multiple freeze-thaw cycles.
<b>Concentration</b>	0.75 mg/ml (Please refer to the vial label for the specific concentration.)
<b>Immunogen</b>	The product is prepared by immunizing rabbit with the synthetic peptide WHSCPEDEAQ-C corresponding to the C-terminal sequence of human HP1 gamma and purified by affinity purification with the peptide.
<b>Purification</b>	Purified IgG
<b>Conjugation</b>	Unconjugated



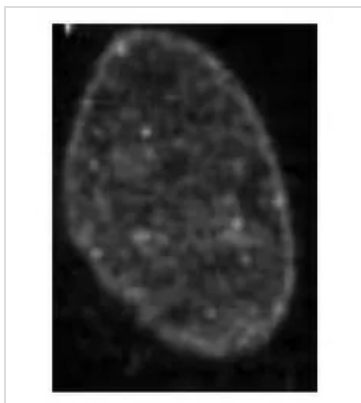
For full product information, images and publications, please visit our [website](#).

For laboratory research use only. Not for any clinical, therapeutic, or diagnostic use in humans or animals. Not for animal or human consumption.

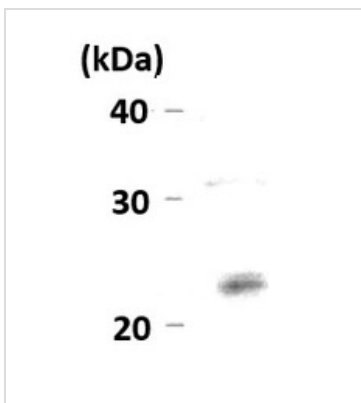
**Note**

Purchasers shall not, and agree not to enable third parties to, analyze, copy, reverse engineer or otherwise attempt to determine the structure or sequence of the product.

## DATA IMAGES

**GTX00898 ICC/IF Image**

ICC/IF analysis of BHK cells using GTX00898 HP1 gamma antibody.  
Fixation : 4% PFA

**GTX00898 WB Image**

WB analysis of BHK cell Lysate using GTX00898 HP1 gamma antibody.



For full product information, images and publications, please visit our [website](#).