

TAF1 antibody

Cat. No. GTX00900

Host	Rabbit
Clonality	Polyclonal
Isotype	IgG
Applications	WB, ICC/IF
Reactivity	Human, Mouse, Rat, Hamster

Package
100 µl

Applications

Application Note

*Optimal dilutions/concentrations should be determined by the researcher.

Suggested dilution	Recommended dilution
WB	1:1000
ICC/IF	1:1000-1:5000

Not tested in other applications.

Calculated MW 213 kDa. ([Note](#))

Properties

Form	Liquid
Buffer	Serum
Preservative	0.05% Sodium azide
Storage	Store as concentrated solution. Centrifuge briefly prior to opening vial. For short-term storage (1-2 weeks), store at 4°C. For long-term storage, aliquot and store at -20°C or below. Avoid multiple freeze-thaw cycles.
Immunogen	Synthetic peptide of human TFIID subunit 1 protein corresponding to amino acids 103-123, STEDAVDYS DINEVAEDESRR-C, conjugated with KLH
Purification	Unpurified
Conjugation	Unconjugated

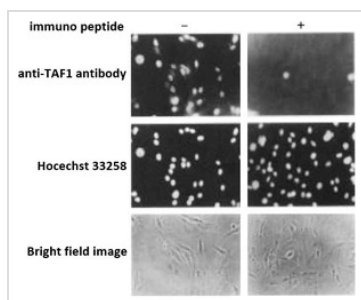
Note

For laboratory research use only. Not for any clinical, therapeutic, or diagnostic use in humans or animals. Not for animal or human consumption.

Purchasers shall not, and agree not to enable third parties to, analyze, copy, reverse engineer or otherwise attempt to determine the structure or sequence of the product.



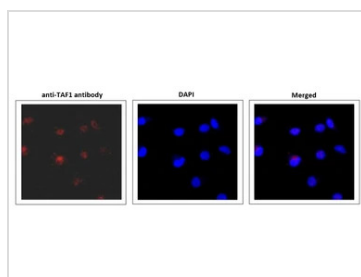
For full product information, images and publications, please visit our [website](#).

DATA IMAGES

GTX00900 ICC/IF Image

ICC/IF analysis of BHK cells using GTX00900 TAF1 antibody. TAF1 antibody pre-incubated with (right panel) or without (left panel) immunogen peptide.

Fixation : 3% formaldehyde

Permeabilization : 1% NP-40

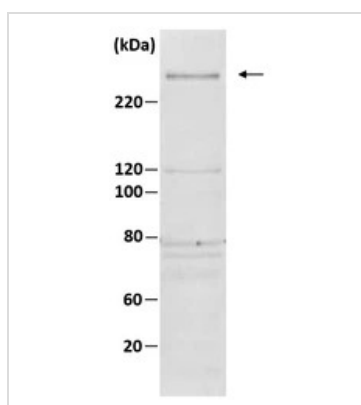

GTX00900 ICC/IF Image

ICC/IF analysis of HeLa cells using GTX00900 TAF1 antibody. TAF1 protein was detected in nucleus.

Fixation : 4% PFA

Permeabilization : 0.25% Triton X-100

Dilution : 1:5000


GTX00900 WB Image

WB analysis of HeLa whole cell lysate (10 µg) using GTX00900 TAF1 antibody.



For full product information, images and publications, please visit our [website](https://www.genetex.com).