

PURA antibody

Cat. No. GTX00901

Host	Rabbit
Clonality	Polyclonal
Isotype	IgG
Applications	WB, ICC/IF, IP
Reactivity	Human, Mouse

Package
100 µg

Applications

Application Note

*Optimal dilutions/concentrations should be determined by the researcher.

Suggested dilution	Recommended dilution
WB	1:1000-1:3000
ICC/IF	1:100-1:500
IP	1:1000

Not tested in other applications.

Calculated MW 35 kDa. ([Note](#))

Properties

Form	Liquid
Buffer	Filter-sterilized PBS, 50% Glycerol
Preservative	No preservatives
Storage	Store as concentrated solution. Centrifuge briefly prior to opening vial. For short-term storage (1-2 weeks), store at 4°C. For long-term storage, aliquot and store at -20°C or below. Avoid multiple freeze-thaw cycles.
Concentration	1 mg/ml (Please refer to the vial label for the specific concentration.)
Immunogen	Recombinant GST-Pura (human, full-length) expressed in E. coli
Purification	Purified by antigen-affinity chromatography From serum
Conjugation	Unconjugated

Note For laboratory research use only. Not for any clinical, therapeutic, or diagnostic use in humans or animals. Not for animal or human consumption.

Purchasers shall not, and agree not to enable third parties to, analyze, copy, reverse engineer or otherwise attempt to determine the structure or sequence of the product.



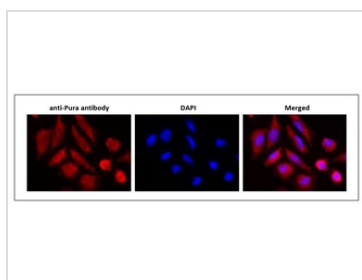
For full product information, images and publications, please visit our [website](#).

DATA IMAGES



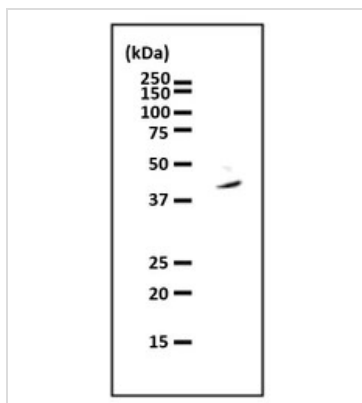
GTX00901 WB Image

WB analysis of HCT116 whole cell lysate transfected with si-Pura for 48 hrs using GTX00901 PURA antibody.



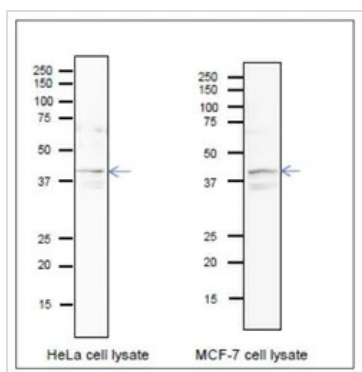
GTX00901 ICC/IF Image

ICC/IF analysis of HeLa cells using GTX00901 PURA antibody.
Dilution : 1:100



GTX00901 IP Image

IP analysis of HeLa whole cell lysate using GTX00901 PURA antibody.



GTX00901 WB Image

WB analysis of various samples using GTX00901 PURA antibody. Blotting was done in wet system at 15 v overnight.

CanGetSignal (Toyobo, Osaka) was used as a signal enhancer.

SDS-PAGE : 12.5%

Left : HeLa whole cell lysate

Right : MCF-7 whole cell lysate

Dilution : 1:1000



For full product information, images and publications, please visit our [website](#).