

## alanyl-tRNA synthetase antibody

**Cat. No. GTX00903**

<b>Host</b>	Rabbit
<b>Clonality</b>	Polyclonal
<b>Isotype</b>	IgG
<b>Applications</b>	WB, ICC/IF
<b>Reactivity</b>	Human, Mouse, Hamster

**Package**  
100 µl

## Applications

**Application Note**

\*Optimal dilutions/concentrations should be determined by the researcher.

Suggested dilution	Recommended dilution
WB	1:100-1:1000
ICC/IF	1:100

Not tested in other applications.

**Calculated MW** 107 kDa. ([Note](#))

## Properties

<b>Form</b>	Liquid
<b>Buffer</b>	Serum
<b>Preservative</b>	0.05% Sodium azide
<b>Storage</b>	Store as concentrated solution. Centrifuge briefly prior to opening vial. For short-term storage (1-2 weeks), store at 4°C. For long-term storage, aliquot and store at -20°C or below. Avoid multiple freeze-thaw cycles.
<b>Immunogen</b>	Recombinant hamster AlaRS protein (695-969) fused with GST
<b>Purification</b>	Unpurified
<b>Conjugation</b>	Unconjugated

**Note**

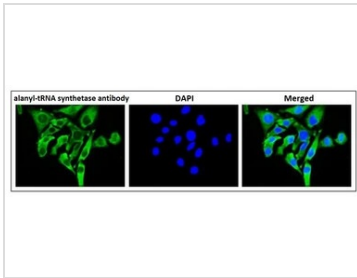
For laboratory research use only. Not for any clinical, therapeutic, or diagnostic use in humans or animals. Not for animal or human consumption.

Purchasers shall not, and agree not to enable third parties to, analyze, copy, reverse engineer or otherwise attempt to determine the structure or sequence of the product.



For full product information, images and publications, please visit our [website](#).

## DATA IMAGES

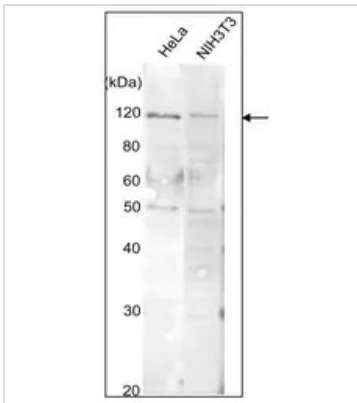
**GTX00903 ICC/IF Image**

ICC/IF analysis of HeLa cells using GTX00903 alanyl-tRNA synthetase antibody.

Fixation : 4% PFA

Permeabilization : 0.25% Triton X-100

Dilution : 1:100

**GTX00903 WB Image**

WB analysis of HeLa and NIH3T3 whole cell lysates using GTX00903 alanyl-tRNA synthetase antibody.

Dilution : 1:300

Loading : 10 µg



For full product information, images and publications, please visit our [website](#).