

ACE3 antibody

Cat. No. GTX00904

Host	Rabbit
Clonality	Polyclonal
Isotype	IgG
Applications	WB, ICC/IF, IP
Reactivity	Mouse

Package
 100 µl

Applications
Application Note

*Optimal dilutions/concentrations should be determined by the researcher.

Suggested dilution	Recommended dilution
WB	1:500-1:1000
ICC/IF	1:100
IP	1:100

Not tested in other applications.

Properties

Form	Liquid
Buffer	Serum
Preservative	0.1% Sodium azide
Storage	Store as concentrated solution. Centrifuge briefly prior to opening vial. For short-term storage (1-2 weeks), store at 4°C. For long-term storage, aliquot and store at -20°C or below. Avoid multiple freeze-thaw cycles.
Immunogen	NTENTPWMKNEGQS (C-terminal of mouse ACE3)
Purification	Unpurified
Conjugation	Unconjugated

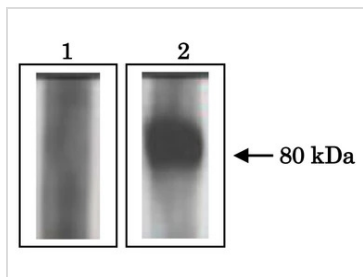
Note

For laboratory research use only. Not for any clinical, therapeutic, or diagnostic use in humans or animals. Not for animal or human consumption.

Purchasers shall not, and agree not to enable third parties to, analyze, copy, reverse engineer or otherwise attempt to determine the structure or sequence of the product.


 For full product information, images and publications, please visit our [website](#).

DATA IMAGES



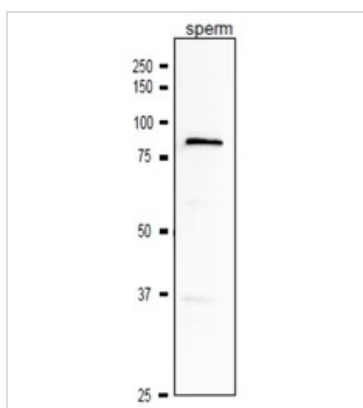
GTX00904 IP Image

IP analysis of mouse sperm using GTX00904 ACE3 antibody.

Lane 1 : Non-immune serum

Lane 2 : Anti-ACE3 antibody

Total protein amount : 100 µg



GTX00904 WB Image

WB analysis of mouse sperm using GTX00904 ACE3 antibody.

Dilution : 1:1000

Loading : 10 µg

SDS-PAGE : 10%

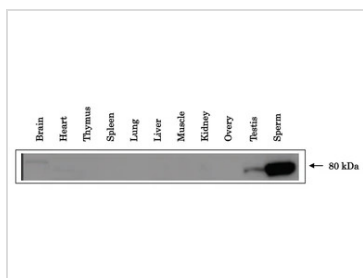


GTX00904 ICC/IF Image

ICC/IF analysis of mouse sperm prepared from cauda epidymis using GTX00904 ACE3 antibody.

Fixation : Ethanol

Dilution : 1:100



GTX00904 WB Image

WB analysis of various mouse tissue samples using GTX00904 ACE3 antibody.

Dilution : 1:500

Loading : 30 µg



For full product information, images and publications, please visit our [website](#).