

SLC22A14 antibody

Cat. No. GTX00905

Host	Rabbit
Clonality	Polyclonal
Isotype	IgG
Applications	WB, ICC/IF, IHC-P
Reactivity	Mouse

Package

50 µg

Applications

Application Note

*Optimal dilutions/concentrations should be determined by the researcher.

Suggested dilution	Recommended dilution
WB	1-2 µg /ml
ICC/IF	10 µg/ml
IHC-P	10 µg/ml

Not tested in other applications.

Product Note We do not recommend use of this product for Human samples.

Properties

Form	Liquid
Buffer	PBS, 50% Glycerol
Preservative	0.09% Sodium azide
Storage	Store as concentrated solution. Centrifuge briefly prior to opening vial. For short-term storage (1-2 weeks), store at 4°C. For long-term storage, aliquot and store at -20°C or below. Avoid multiple freeze-thaw cycles.
Concentration	1 mg/ml (Please refer to the vial label for the specific concentration.)
Immunogen	Synthetic peptide corresponding to mouse Slc22a14 protein aa 615-629, PKMDLPVQSLKAQPP, conjugated with KLH
Purification	Purified by antigen-affinity chromatography
Conjugation	Unconjugated

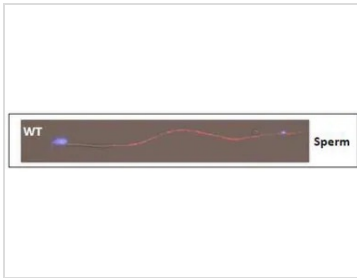
Note

For laboratory research use only. Not for any clinical, therapeutic, or diagnostic use in humans or animals. Not for animal or human consumption.

Purchasers shall not, and agree not to enable third parties to, analyze, copy, reverse engineer or otherwise attempt to determine the structure or sequence of the product.



For full product information, images and publications, please visit our [website](#).

DATA IMAGES

GTX00905 ICC/IF Image

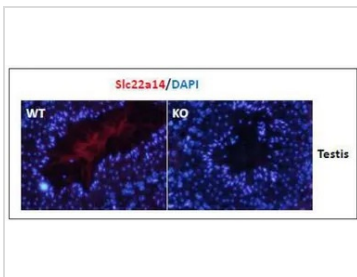
ICC/IF analysis of mouse spermatozoa from cauda epididymis using GTX00905 SLC22A14 antibody.

Slc22a14 is predominantly localised to the principal piece.

Red : Primary antibody

Blue : DAPI

Dilution : 10 µg/ml

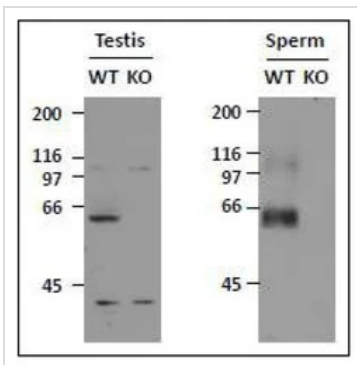

GTX00905 IHC-P Image

IHC-P analysis of mouse testis tissue section (epididymis) using GTX00905 SLC22A14 antibody.

WT: Wild-type mouse

KO: Knock-out mouse

Dilution : 10 µg/ml


GTX00905 WB Image

WB analysis of mouse testis and sperm using GTX00905 SLC22A14 antibody.

WT : Wild-type mouse

KO : Knock-out mouse

Dilution : 1 µg/ml



For full product information, images and publications, please visit our [website](https://www.genetex.com).