

Leaf FNR antibody

Cat. No. GTX00908

Host	Rabbit
Clonality	Polyclonal
Isotype	IgG
Applications	WB, ELISA
Reactivity	Arabidopsis thaliana, Zea mays

Package
100 µg

Applications

Application Note

*Optimal dilutions/concentrations should be determined by the researcher.

Suggested dilution	Recommended dilution
WB	1:1000-1:10000
ELISA	Assay dependent

Not tested in other applications.

Product Note

This antibody recognizes Plant L-FNR proteins including Maize L-FNR3, L-FNR2 and L-FNR1, and Arabidopsis FNR1 and FNR2.

Properties

Form	Liquid
Buffer	Filter-sterilized PBS, 50% Glycerol
Preservative	No preservative
Storage	Store as concentrated solution. Centrifuge briefly prior to opening vial. For short-term storage (1-2 weeks), store at 4°C. For long-term storage, aliquot and store at -20°C or below. Avoid multiple freeze-thaw cycles.
Concentration	1 mg/ml (Please refer to the vial label for the specific concentration.)
Immunogen	Purified recombinant maize leaf-FNR3 protein (full-size, no-tag attached)
Purification	Protein A purified From serum
Conjugation	Unconjugated

Note

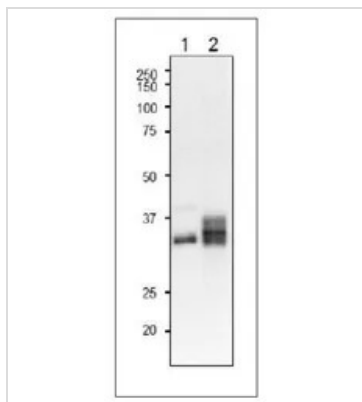
For laboratory research use only. Not for any clinical, therapeutic, or diagnostic use in humans or animals. Not for animal or human consumption.

Purchasers shall not, and agree not to enable third parties to, analyze, copy, reverse engineer or otherwise attempt to determine the structure or sequence of the product.



For full product information, images and publications, please visit our [website](#).

DATA IMAGES



GTX00908 WB Image

WB analysis of various samples using GTX00908 Leaf FNR antibody. The molecular masses of mature forms of maize FNR1, FNR2 and FNR3 are 34.97, 35.57 and 34.7 kD, respectively.

Lane 1 : Arabidopsis leaf extract

Lane 2 : Maize leaf extract

Dilution : 1:1000

Loading : 2 µg



For full product information, images and publications, please visit our [website](#).