

GltB + GltD antibody

Cat. No. GTX00922

Host	Rabbit
Clonality	Polyclonal
Isotype	IgG
Applications	WB, ELISA
Reactivity	Cyanobacteria, Synechocystis sp. PCC6803

Package
200 µg

Applications

Application Note

*Optimal dilutions/concentrations should be determined by the researcher.

Suggested dilution	Recommended dilution
WB	1:1000-1:2000
ELISA	Assay dependent

Not tested in other applications.

Product Note It reacts with cyanobacteria glutamate synthase, GltB and GltD proteins.

Properties

Form	Liquid
Buffer	Filter-sterilized PBS, 50% Glycerol
Preservative	No preservatives
Storage	Store as concentrated solution. Centrifuge briefly prior to opening vial. For short-term storage (1-2 weeks), store at 4°C. For long-term storage, aliquot and store at -20°C or below. Avoid multiple freeze-thaw cycles.
Concentration	4 mg/ml (Please refer to the vial label for the specific concentration.)
Immunogen	Purified recombinant cyanobacterium, <i>Leptolyngbya boryana</i> (<i>Plectonema boryanum</i>), glutamate synthase (full-size, no-tag attached)
Purification	Protein A/G purified
Conjugation	Unconjugated

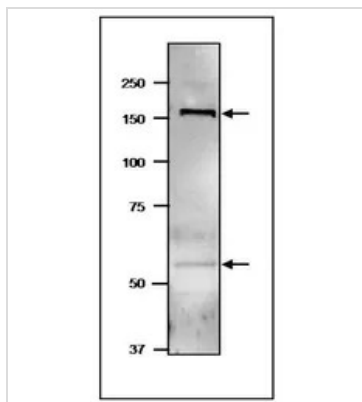
Note For laboratory research use only. Not for any clinical, therapeutic, or diagnostic use in humans or animals. Not for animal or human consumption.

Purchasers shall not, and agree not to enable third parties to, analyze, copy, reverse engineer or otherwise attempt to determine the structure or sequence of the product.



For full product information, images and publications, please visit our [website](#).

DATA IMAGES



GTX00922 WB Image

WB analysis of soluble fraction of *Synechocystis* sp. PCC6803 extract using GTX00922 GltB + GltD antibody.

Molecular mass of GltB (large subunit of NADPH-dependent GOGAT) is 168 kDa, GltD (small subunit of

NADPH-dependent GOGAT) is 54 kDa. Dilution : 4 µg/ml



For full product information, images and publications, please visit our [website](https://www.genetex.com).