

Sucrose-Phosphate Synthase antibody

Cat. No. GTX00931

Host	Rabbit
Clonality	Polyclonal
Isotype	IgG
Applications	WB, ELISA
Reactivity	Zea mays, Sugarcane

Package
200 µg

Applications

Application Note

*Optimal dilutions/concentrations should be determined by the researcher.

Suggested dilution	Recommended dilution
WB	1:500-1:2000
ELISA	Assay dependent

Not tested in other applications.

Properties

Form	Liquid
Buffer	Filter-sterilized PBS, 50% Glycerol
Preservative	No preservatives
Storage	Store as concentrated solution. Centrifuge briefly prior to opening vial. For short-term storage (1-2 weeks), store at 4°C. For long-term storage, aliquot and store at -20°C or below. Avoid multiple freeze-thaw cycles.
Concentration	4 mg/ml (Please refer to the vial label for the specific concentration.)
Immunogen	Purified recombinant sugarcane SPS1 protein (C-terminal 362 amino acids with His6 Tag at the N-terminus)
Purification	Protein A/G purified
Conjugation	Unconjugated

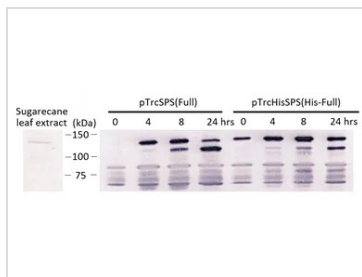
Note

For laboratory research use only. Not for any clinical, therapeutic, or diagnostic use in humans or animals. Not for animal or human consumption.

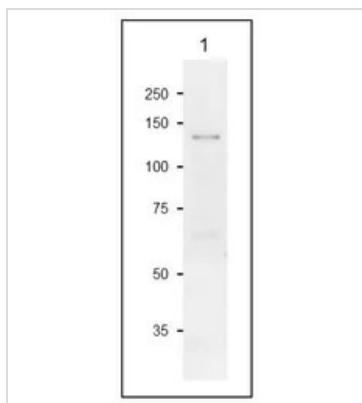
Purchasers shall not, and agree not to enable third parties to, analyze, copy, reverse engineer or otherwise attempt to determine the structure or sequence of the product.



For full product information, images and publications, please visit our [website](#).

DATA IMAGES

GTX00931 WB Image

WB analysis of E. coli transformed with SPS 1 overexpressing plasmid: pTrcSPS (full length of SPS) or pTrcHisSPS (full length with His6 Tag) and were harvested at the indicated time points after IPTG induction using GTX00931 Sucrose-Phosphate Synthase antibody. The lower band is a truncated SPS protein. Molecular size markers in the 2nd lane are 150, 100 and 75 kDa.


GTX00931 WB Image

WB analysis of maize leaf extract using GTX00931 Sucrose-Phosphate Synthase antibody.
Dilution : 1:500
Loading : 20 µg



For full product information, images and publications, please visit our [website](https://www.genetex.com).