

2S3 albumin antibody

Cat. No. GTX00935

Host	Rabbit
Clonality	Polyclonal
Isotype	IgG
Applications	WB, ELISA, EM
Reactivity	Arabidopsis thaliana

Package
200 µg

Applications

Application Note

*Optimal dilutions/concentrations should be determined by the researcher.

Suggested dilution	Recommended dilution
WB	1:10000-1:20000
ELISA	Assay dependent
EM	1:500

Not tested in other applications.

Calculated MW 19 kDa. ([Note](#))

Product Note It reacts with the precursor and large subunit of Arabidopsis thaliana 2S albumin.

Properties

Form	Liquid
Buffer	Filter-sterilized PBS, 50% Glycerol
Preservative	No preservatives
Storage	Store as concentrated solution. Centrifuge briefly prior to opening vial. For short-term storage (1-2 weeks), store at 4°C. For long-term storage, aliquot and store at -20°C or below. Avoid multiple freeze-thaw cycles.
Concentration	2 mg/ml (Please refer to the vial label for the specific concentration.)
Immunogen	Synthetic peptide (C)AARAVSLQGQHGPFQSRKIY, whose sequence is derived from the large subunit of Arabidopsis 2S3 albumin
Purification	Protein A/G purified From serum
Conjugation	Unconjugated



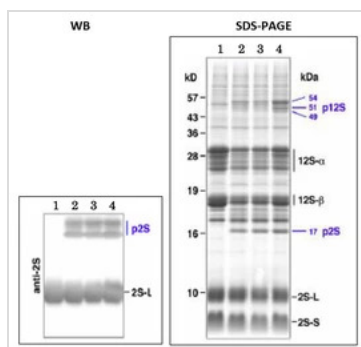
For full product information, images and publications, please visit our [website](#).

For laboratory research use only. Not for any clinical, therapeutic, or diagnostic use in humans or animals. Not for animal or human consumption.

Note

Purchasers shall not, and agree not to enable third parties to, analyze, copy, reverse engineer or otherwise attempt to determine the structure or sequence of the product.

DATA IMAGES

**GTX00935 WB Image**

WB analysis of Arabidopsis dry seeds extract using GTX00935 2S3 albumin antibody.

p2S: Precursor of 2S

2S-L : Large subunit of 2S

Lane 1 : Dry seeds of wildtype

Lane 2-4 : mag2-2: Dry seeds Mutants that accumulate the precursors of major storage proteins (mag5-1, mag2-1, and mag4-1)

Dilution : 1:2500



For full product information, images and publications, please visit our [website](#).