

## 12S globulin antibody

Cat. No. GTX00936

Host	Rabbit
Clonality	Polyclonal
Isotype	IgG
Applications	WB, ELISA, EM, IHC
Reactivity	Arabidopsis thaliana

Package  
200 µg

## Applications

## Application Note

\*Optimal dilutions/concentrations should be determined by the researcher.

Suggested dilution	Recommended dilution
WB	1:3000-1:10000
ELISA	Assay dependent
EM	1:50
IHC	1:100

Not tested in other applications.

Calculated MW 58 kDa. ( [Note](#) )

Product Note It reacts with precursor and alpha-subunit of Arabidopsis thaliana 12S globulin.

## Properties

Form	Liquid
Buffer	Filter-sterilized PBS, 50% Glycerol
Preservative	No preservatives
Storage	Store as concentrated solution. Centrifuge briefly prior to opening vial. For short-term storage (1-2 weeks), store at 4°C. For long-term storage, aliquot and store at -20°C or below. Avoid multiple freeze-thaw cycles.
Concentration	2 mg/ml (Please refer to the vial label for the specific concentration.)
Immunogen	A. thaliana 12S globulin alpha-subunit purified on SDS-PAGE
Purification	Protein A/G purified From serum
Conjugation	Unconjugated

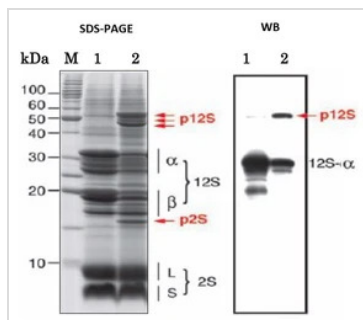
For full product information, images and publications, please visit our [website](#).

For laboratory research use only. Not for any clinical, therapeutic, or diagnostic use in humans or animals. Not for animal or human consumption.

## Note

Purchasers shall not, and agree not to enable third parties to, analyze, copy, reverse engineer or otherwise attempt to determine the structure or sequence of the product.

## DATA IMAGES



### GTX00936 WB Image

WB analysis of Arabidopsis dry seeds extract using GTX00936 12S globulin antibody. P12S is the precursor of 12S globulin.

Lane 1 : Wild-type seed

Lane 2 : Atvst1-1 mutant (defective in storage protein transport)

Dilution : 1:5000



For full product information, images and publications, please visit our [website](https://www.genetex.com).