

Goat Anti-Rabbit IgM antibody, pre-adsorbed (Biotin)

Cat. No. GTX00941

Host	Goat
Clonality	Polyclonal
Isotype	IgG
Applications	WB, IHC-P, IHC-Fr, FCM, ELISA
Reactivity	Rabbit

Package
500 µg

Applications

Application Note

*Optimal dilutions/concentrations should be determined by the researcher.

Suggested dilution	Recommended dilution
WB	Assay dependent
IHC-P	Assay dependent
IHC-Fr	Assay dependent
FCM	Assay dependent
ELISA	1:5,000-1:20,000

Not tested in other applications.

Product Note PreAdsorbed with Rabbit IgG. May react with immunoglobulins from other species.

Properties

Form	Liquid
Buffer	PBS
Preservative	0.1% Sodium azide
Storage	Store as concentrated solution. Centrifuge briefly prior to opening vial. Store at 4°C.
Concentration	0.5 mg/ml (Please refer to the vial label for the specific concentration.)
Immunogen	rabbit IgM
Purification	Purified by antigen-affinity chromatography
Conjugation	Biotin

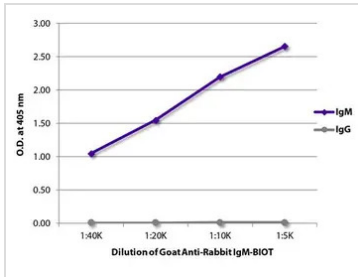


For full product information, images and publications, please visit our [website](#).

For laboratory research use only. Not for any clinical, therapeutic, or diagnostic use in humans or animals. Not for animal or human consumption.

Note
 Purchasers shall not, and agree not to enable third parties to, analyze, copy, reverse engineer or otherwise attempt to determine the structure or sequence of the product.

DATA IMAGES



GTX00941 ELISA Image

ELISA analysis of purified rabbit IgM and IgG using serially diluted GTX00941 Goat Anti-Rabbit IgM antibody (Biotin) followed by Streptavidin-HRP.



For full product information, images and publications, please visit our [website](#).