

PARP (cleaved) antibody [GT1181]

Cat. No. GTX00943

Host	Rabbit
Clonality	Monoclonal
Isotype	IgG
Applications	WB, IHC-P
Reactivity	Human, Mouse, Pig

References (3)

Package

100 µl

Applications

Application Note

*Optimal dilutions/concentrations should be determined by the researcher.

Suggested dilution	Recommended dilution
WB	1:500 - 1:2000
IHC-P	Assay dependent

Not tested in other applications.

Calculated MW	113 kDa. (Note)
Observed MW (kDa)	~25 kDa. The observed M.W. is based on the following publication. PMID: 31045193
Product Note	This antibody is specific for cleaved PARP (~25kDa). It does not recognize full-length (~116kDa) and the large fragment (~89 kDa).

Properties

Form	Liquid
Buffer	PBS, 50% Glycerol
Preservative	0.02% Sodium azide
Storage	Store as concentrated solution. Centrifuge briefly prior to opening vial. For short-term storage (1-2 weeks), store at 4°C. For long-term storage, aliquot and store at -20°C or below. Avoid multiple freeze-thaw cycles.
Concentration	Batch dependent (Please refer to the vial label for the specific concentration.)
Immunogen	A synthesized peptide derived from human Cleaved PARP.
Purification	Purified by affinity chromatography
Conjugation	Unconjugated

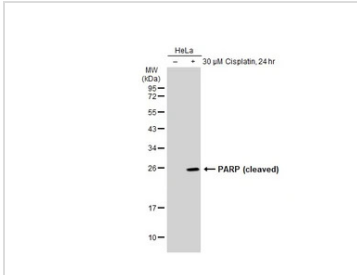


For full product information, images and publications, please visit our [website](#).

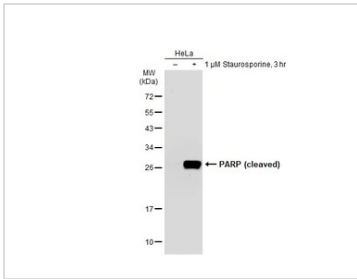
For laboratory research use only. Not for any clinical, therapeutic, or diagnostic use in humans or animals. Not for animal or human consumption.

Note

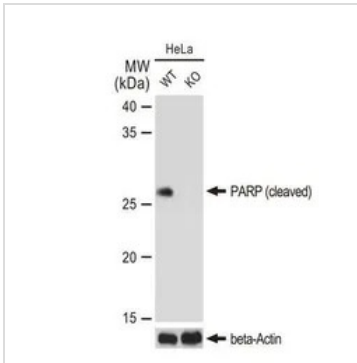
Purchasers shall not, and agree not to enable third parties to, analyze, copy, reverse engineer or otherwise attempt to determine the structure or sequence of the product.

DATA IMAGES

GTX00943 WB Image

Untreated (–) and treated (+) HeLa whole cell extracts (30 μg) were separated by 12% SDS-PAGE, and the membrane was blotted with PARP (cleaved) antibody [GT1181] (GTX00943) diluted at 1:500. The HRP-conjugated anti-rabbit IgG antibody (GTX213110-01) was used to detect the primary antibody.


GTX00943 WB Image

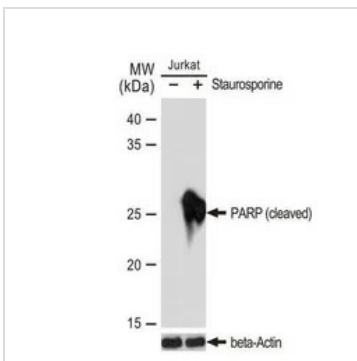
Untreated (–) and treated (+) HeLa whole cell extracts (30 μg) were separated by 12% SDS-PAGE, and the membrane was blotted with PARP (cleaved) antibody [GT1181] (GTX00943) diluted at 1:500. The HRP-conjugated anti-rabbit IgG antibody (GTX213110-01) was used to detect the primary antibody.


GTX00943 WB Image

WB analysis of wild-type (WT) and PARP (cleaved) knockout (KO) HeLa cell extracts using GTX00943 PARP (cleaved) antibody [GT1181].

Dilution : 1:1000

Loading : 25μg


GTX00943 WB Image

WB analysis of Jurkat cell extracts with/without Staurosporine (1μM, RT, 3 hrs) treatment using GTX00943 PARP (cleaved) antibody [GT1181].

Dilution : 1:1000

Loading : 25μg



For full product information, images and publications, please visit our [website](https://www.genetex.com).