

NFkB p65 antibody [GT1185]

Cat. No. GTX00947

Host	Rabbit
Clonality	Monoclonal
Isotype	IgG
Applications	WB, IHC-P, IP
Reactivity	Human, Mouse, Rat

References (1)

Package

100 µl

Applications

Application Note

*Optimal dilutions/concentrations should be determined by the researcher.

Suggested dilution	Recommended dilution
WB	1:500 - 1:2000
IHC-P	1:50 - 1:200
IP	1:50 - 1:200

Not tested in other applications.

Calculated MW 60 kDa. ([Note](#))

Properties

Form	Liquid
Buffer	PBS, 50% Glycerol
Preservative	0.02% Sodium azide
Storage	Store as concentrated solution. Centrifuge briefly prior to opening vial. For short-term storage (1-2 weeks), store at 4°C. For long-term storage, aliquot and store at -20°C or below. Avoid multiple freeze-thaw cycles.
Concentration	Batch dependent (Please refer to the vial label for the specific concentration.)
Immunogen	A synthesized peptide derived from human NF-κB p65.
Purification	Purified by affinity chromatography
Conjugation	Unconjugated

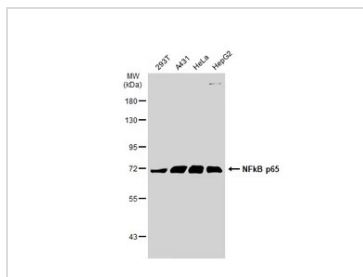
Note For laboratory research use only. Not for any clinical, therapeutic, or diagnostic use in humans or animals. Not for animal or human consumption.

Purchasers shall not, and agree not to enable third parties to, analyze, copy, reverse engineer or otherwise attempt to determine the structure or sequence of the product.



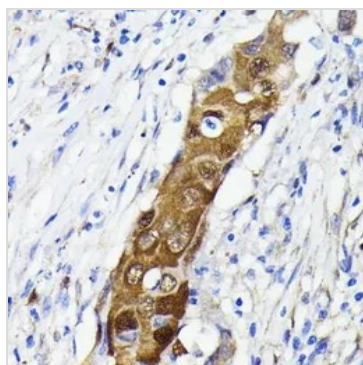
For full product information, images and publications, please visit our [website](#).

DATA IMAGES



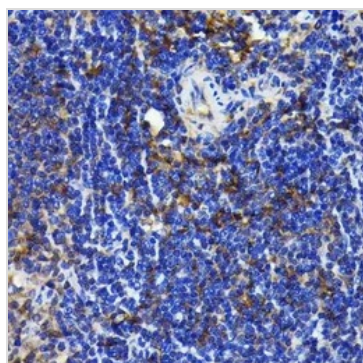
GTX00947 WB Image

Various whole cell extracts (30 µg) were separated by 7.5% SDS-PAGE, and the membrane was blotted with NfκB p65 antibody [GT1185] (GTX00947) diluted at 1:500. The HRP-conjugated anti-rabbit IgG antibody (GTX213110-01) was used to detect the primary antibody.



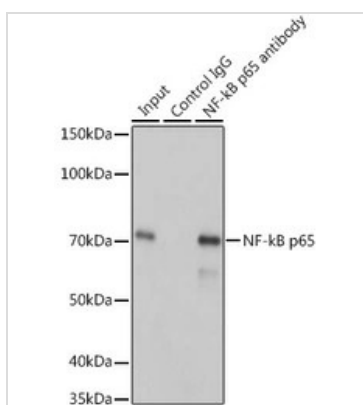
GTX00947 IHC-P Image

IHC-P analysis of human lung cancer tissue section using GTX00947 NfκB p65 antibody [GT1185].
Dilution : 1:100



GTX00947 IHC-P Image

IHC-P analysis of rat spleen tissue section using GTX00947 NfκB p65 antibody [GT1185].
Dilution : 1:100



GTX00947 IP Image

IP analysis of HeLa cell lysate using GTX00947 NfκB p65 antibody [GT1185].
Antibody amount : 3µg / 200µg lysate
Dilution : 1:1000



For full product information, images and publications, please visit our [website](#).